

ZIMMER GROUP – THE KNOW-HOW FACTORY

OUR KNOW-HOW FACTORY WORKS WITH ALL INDUSTRIES AND DELIVERS EVERYTHING FROM A SINGLE SOURCE. OUR PRODUCT RANGE IS FAR REACHING, BOTH IN ITS DEPTH AND ITS BREADTH.

DO YOU HAVE A DEVELOPMENT PROBLEM? WE’LL SOLVE IT! SET US A CHALLENGE IN RESEARCH AND DEVELOPMENT. COUNTLESS INNOVATIONS ORIGINATE FROM OUR COMPANY. WE ARE ENTHUSIASTIC ABOUT NEW PRODUCTS AND PRIDE OURSELVES ON OUR CORPORATE PIONEERING SPIRIT.

CONTACT – WORLDWIDE

With our current 13 global subsidiaries and partners in over 125 countries, we offer the excellent service of a technology leader. We look forward to hearing from you!

www.zimmer-group.com/en-us/contact



HERE FOR YOU 24/7/365 – OUR VIRTUAL TRADE SHOW BOOTH

With impressive features such as an animated camera flight, clickable information hotspots and 3D models that can be rotated, we guarantee that you will be thrilled—virtually.

www.zimmer-group.com/en-us/expo



HEADQUARTER: ZIMMER GROUP

Am Glockenloch 2
DE 77866 Rheinau
T +49 7844 9139-0
F +49 7844 9139-1199
info.de@zimmer-group.com
www.zimmer-group.com



Handling technology

Overview
Gripper / Robot accessories

THE KNOW-HOW FACTORY

www.zimmer-group.com



HANDLING TECHNOLOGY

GRIPPER TECHNOLOGY HIGHLIGHTS

UNIVERSALLY APPLICABLE GRIPPER SOLUTIONS

Process-reliable gripping: This can only be achieved with the right gripper to make your robot capable of handling its tasks. Zimmer Group has been developing new and improved grippers over and over again since 1980, helping you to make your production more flexible and efficient.

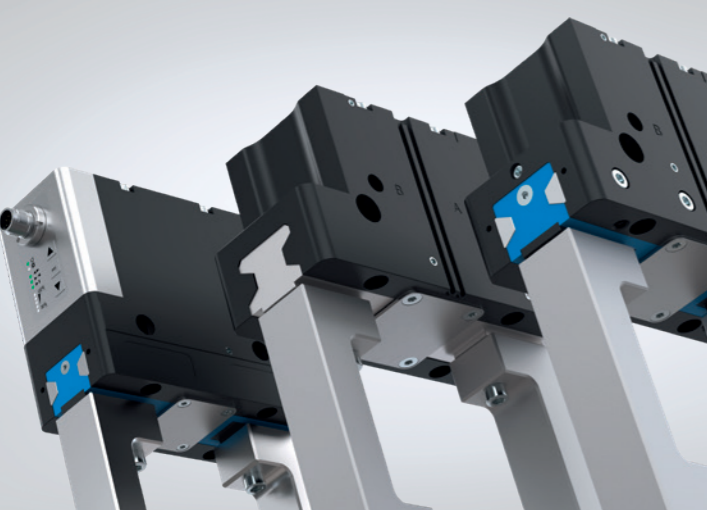
To do this, we consistently focus on the needs of our users, develop the right gripper solutions for specific applications and markets, and always strive for precision and quality. You can find these decades of experience in all of our grippers, especially in our 5000 Premium series, which gives you a comprehensive worry-free package, including corrosion protection, IP67 and 30 million maintenance-free cycles.

WELL-FOUNDED SELECTION DECISION VIA CLICK

With the Zimmer Group’s online Product Finder, you can find the right product for your application quickly and easily. The calculation, selection guide and configurator functions guide you with the required product data from the start to your final decision.



Scan here to go to our Product Finder for grippers



5000 PRODUCT FAMILY OUR KNOW-HOW – YOUR ADVANTAGES

Steel Linear Guide – The superior guidance system concept

The steel / steel guide stands for lasting precision, durability and a long service life—with maintenance intervals of up to 30 million gripping cycles. Benefit from these features and increase the profitability and process reliability of your machine.

Leakproof and corrosion protected – The universal gripper

Suitable for virtually all ambient conditions, with a sealed guide up to IP67 and corrosion protection as standard, you are able to use this gripper universally. As a result, the range of models in your production is reduced, along with a reduction in associated storage and process costs.

Aluminum Linear Guide – The Alternative

Reduced to those aspects which are the most important, the steel / aluminum guide variant offers significantly better performance when compared to a similar gripper with a T-slot travel guide, and is on par with the best principles of toothed guidance systems.

HANDLING TECHNOLOGY

GRIPPERS AT A GLANCE

2-JAW PARALLEL GRIPPER

PNEUMATIC

6	MGP800 Stroke per jaw: Gripping force: Weight: IP class: Maintenance free (max.):	1 mm - 12 mm 6 N - 400 N 0.008 kg - 0.46 kg 40 10 Mio. cycles
----------	---	---

	GP400 Stroke per jaw: Gripping force: Weight: IP class: Maintenance free (max.):	3 mm - 30 mm 85 N - 19275 N 0.08 kg - 18.9 kg 40 10 Mio. cycles
--	--	---

4	GPP5000 Hub pro Backe: Greifkraft: Gewicht: IP-Klasse: Wartungsfreiheit (max.):	2,5 mm - 45 mm 140N - 26.950 N 0,08 kg - 50 kg 64/67 30 Mio. Zyklen
----------	---	---

	GH6000 Hub pro Backe: Greifkraft: Gewicht: IP-Klasse: Wartungsfreiheit (max.):	20 mm - 200 mm 120 N - 3.400 N 0,3 kg - 22,7 kg 40 10 Mio. Zyklen
--	--	---

	GPH8000 Stroke per jaw: Gripping force: Weight: IP class: Maintenance free (max.):	62 mm - 220 mm 900 N - 3,300 N 5.7 kg - 51 kg 54 5 Mio. cycles
--	--	--

PNEUMATICALLY INTELLIGENT

	GPP5000IL Stroke per jaw: Gripping force: Weight: IP class: Maintenance free (max.):	3 mm - 25 mm 330 N - 8730N 0.45 kg - 10.4 kg 64 30 Mio. cycles
--	--	--

ELECTRIC

2	GEP2000 Stroke per jaw: Gripping force: Weight: IP class: Maintenance free (max.):	6 mm - 20 mm 40 N - 500 N 0.18 kg - 1.3 kg 40/54 10 Mio. cycles
----------	--	---

	GEP5000 Stroke per jaw: Gripping force: Weight: IP class: Maintenance free (max.):	6 mm - 10 mm 540 N - 1,520N 0.79 kg - 1.66 kg 64 30 Mio. cycles
--	--	---

4	GEH6000IL Stroke per jaw: Gripping force: Weight: IP class: Maintenance free (max.):	40 mm - 80 mm 180 N - 1800 N 0.7 kg - 2.6 kg 54 5 Mio. cycles
----------	--	---

3-JAW CONCENTRIC GRIPPER

PNEUMATIC

4	GPD5000 Stroke per jaw: Gripping force: Weight: IP class: Maintenance free (max.):	2.5 mm - 45 mm 310 N - 72.500 N 0.14 kg - 100 kg 64/67 30 Mio. cycles
----------	--	---

PNEUMATICALLY INTELLIGENT

	GPD5000IL Stroke per jaw: Gripping force: Weight: IP class: Maintenance free (max.):	3 mm - 25 mm 740 N - 22,850 N 0.75 kg - 18.6 kg 64 30 Mio. cycles
--	--	---

ELECTRIC

4	GED5000 Stroke per jaw: Gripping force: Weight: IP class: Maintenance free (max.):	6 mm - 10 mm 980 N - 1,520 N 1.09 kg - 2.33 kg 64 30 Mio. cycles
----------	--	--

4	GED6000IL Stroke per jaw: Gripping force: Weight: IP class: Maintenance free (max.):	40 mm 800 N - 1,700 N 2.8 kg - 4.9 kg 54 5 Mio. cycles
----------	--	--

2-JAW ANGULAR GRIPPER

PNEUMATIC

	GK Stroke per jaw: Gripping force: Weight: IP class: Maintenance free (max.):	90° 70 N - 4,250 N 0.1 kg - 4.1 kg 20 10 Mio. cycles
--	---	--

	GPW5000 Stroke per jaw: Gripping force: Weight: IP class: Maintenance free (max.):	+15° / -2° 1,330 N - 14,500 N 0.9 kg - 12.1 kg 64 30 Mio. cycles
--	--	--

2-JAW PARALLEL ROTARY GRIPPER

PNEUMATIC

	DGP400 Stroke per jaw: Gripping force: Weight: IP class: Maintenance free (max.):	4 mm 115 N - 155 N 0.44 kg - 0.48 kg 40 1.5 Mio cycles
--	---	--

INTERNAL GRIPPER

PNEUMATIC

	LGS, LG1000, LGG Full stroke in Ø: Gripper hole diameter: Weight: IP class:	1 mm - 16 mm 4 mm - 135.5 mm 0.031 kg - 2.7 kg 40/54
--	--	---

Thanks to low particle emissions, they are certified according to international standard DIN EN ISO 14644-1 for clean room classes between **2** and **6**.



HANDLING TECHNOLOGY

ROBOT ACCESSORIES

EXCHANGE

MANUAL

HWR2000 Connection flange: Recommended handling weight: Pneumatic energy transfer: Electrical energy transfer:	TK 31.5 - TK 50 5 kg - 20 kg 4 - 8-fold Optional via energy element
---	--

HWR Connection flange: Recommended handling weight: Pneumatic energy transfer: Electrical energy transfer:	TK 63 - TK 80 50 kg 6-fold Optional via energy element
---	---

PNEUMATIC

WWR1000 Connection flange: Recommended handling weight: Pneumatic energy transfer: Electrical energy transfer:	TK 160 - TK 200 500 kg - 1,000 kg Optional via energy element Optional via energy element
---	--

WWR Connection flange: Recommended handling weight: Pneumatic energy transfer: Electrical energy transfer:	TK 40 - TK 160 20 kg - 300 kg 4 - 10-fold Optional via energy element
---	--

AUTOMATIC

FWR Connection flange: Recommended handling weight: Pneumatic energy transfer: Electrical energy transfer:	TK 40 - TK 80 13 kg - 29 kg 4-fold Optional via energy element
---	---

ENERGY ELEMENTS

ELECTRIC / COMMUNICATION

WER For transmitting signal and load currents.	IO-Link PROFINET ETHERCAT INDUSTRIAL ETHERNET
--	---

HYDRAULIC

WER For transmitting hydraulics, pneumatics and vacuum.	
---	--

COMPENSATE

PNEUMATIC

FGR Connection flange: Recommended handling weight: Deflection in X/Y: Centered holding force:	TK 40 - TK 50 10 kg - 20 kg 2 mm - 4 mm 120 N - 250 N
---	--

XYR1000 Connection flange: Deflection in X/Y: Centered holding force:	TK 40 - TK 200 3 mm - 12.5 mm 150 N - 3,000 N
---	---

ZR1000 Connection flange: Deflection in Z: Holding force:	TK 40 - TK 200 8 mm - 20 mm 250 N - 11,500 N
---	--

ARP Connection flange: Recommended handling weight: Deflection in X/Y: Deflection in Z: Centered holding force:	TK 40 - TK 160 3 kg - 60 kg 2 mm 2 mm 170 N - 3,000 N
---	---

PROTECT

PNEUMATIC

CSR Connection flange: Z-axis deflection: Horizontal deflection +/-:	TK 50 - TK 160 12.5 mm - 28 mm 9° - 12.5°
--	---

CRR Connection flange: Z-axis deflection: Horizontal deflection +/-:	TK 40 - TK 200 8 mm - 42 mm 13° - 14°
--	---

TRANSMIT

MANUAL

DVR1000 Connection flange: Continuous torque: Pneumatic energy transfer: Electrical energy transfer:	TK 125 4 Nm 8-fold 4-pin + PE
---	--

DVR Connection flange: Continuous torque: Pneumatic energy transfer: Electrical energy transfer:	TK 40 - TK 160 1 Nm - 4 Nm 4 - 8-fold 4 - 12-pin
---	---

ANGLE FLANGE

WFR Suitable for more than 40 different robot types and combinable with many different grippers for the machine load.	
---	--