



NEW
2016



Soft Close

Self-Closing Units
for innovative drawer and
sliding door damping

- + Set Chiusura
- + Silento Doppio
- + Silento Delicato
- + Silento Chiuso
- + Retro 4 Fluido

THE KNOW-HOW FACTORY

THE SOFT SIDE OF LIFE

Our damping solutions make the closing of sliding systems, doors, drawers and lids into an unmissable experience. Luxury at home, in your office, in your house, in your car and even in your spare time. Soft Close can be adapted to your every need.

BRANCH FIELDS

- ▶ Fitting and furniture industry
- ▶ Systems and mechanical engineering
- ▶ Appliance manufacturers
- ▶ Automotive applications



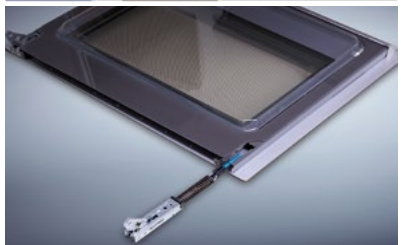
THE LATEST INNOVATIONS AT A GLANCE

This brochure gives an overview of the 2016 product innovations for Soft Close Self-Closing Units.

The damping is integrated invisibly in the rail systems for especially quiet and soft closing. The high quality of the materials and processes used make **ZIMMER** products exceptionally high-performance, long-lasting and easy-to-use, thereby suited to application in high-end applications.

APPLICATION AREAS

- ▶ Drawer systems
- ▶ Sliding door systems
- ▶ Lids
- ▶ Hinges
- ▶ Retrofit sets
- ▶ Customer-specific solutions



SET CHIUSURA

A NEW AND REVOLUTIONARY FITTING SET FOR SLIDING DOORS



New technology for greater operating comfort – easy opening and closing. The complete system fitting for optimal installation in the aluminium frames of sliding doors.

Self-Closing Unit with air friction damping

Weight to brake gently: 25 kg

PRODUCT CHARACTERISTICS

- ▶ For aluminium frame sliding systems
- ▶ Complete set consisting of:
4 Soft Close Self-Closing Units,
1 upper guiding waggon, 1 lower waggon,
fixing material, assembly instructions
- ▶ 4 activators available
- ▶ Narrow profile combination for elegant designs
- ▶ Almost invisible integration from concealed fittings
- ▶ Optimally-arrestable system: activator above, guiding waggon below
- ▶ Simple fitting with screw and plug-in connections
- ▶ LGA certificate available

Technical data

Housing length [mm]	Housing width [mm]	Housing height [mm]	Housing width incl. hook [mm]	Stroke [mm]	Weight to brake gently [kg]	Medium
Set Chiusura Order-no.: S000-00-011				Activators Order-no.: S000-00-012		
upper waggon						
247	39	15.5		50	25	Air
lower waggon						
260.9	13.4	64.5	18.5	50	25	Air

SILENTO DOPPIO

HIGH-QUALITY 2-WAY DAMPING IN A SINGLE UNIT



ACTIVATORS



Activator

D000-00-031

Activator

D000-00-035

The new **Silento Doppio** enables the soft closing of narrow and lightweight sliding doors in both directions from a weight of 15 kg. The innovative damping technology can be integrated in the smallest of spaces.

Self-Closing Unit with fluid damping Weight to brake gently: up to 30 kg

PRODUCT CHARACTERISTICS

- ▶ Specially-developed damping system
- ▶ For narrow sliding doors from 15 kg weight requiring soft-braking
- ▶ Compact and versatile
- ▶ Suitable for existing sliding systems
- ▶ Easy retrofitting
- ▶ Flexible and easily-adaptable thanks to double-sided assembly
- ▶ Soft closing makes for quiet operation
- ▶ Simple operation

Technical data

Housing length [mm]	Housing width [mm]	Housing* height [mm]	Clearance Fixing points [mm]	Stroke [mm]	Weight to brake gently [kg]	Medium
Silento Doppio				Order no.: E050-08-039/15 kg, E050-08-071/30 kg		
237	12.2	17.8/28.9	224	50	15/30	Fluid

* without/with lock lever

SILENTO DELICATO

ULTRA-COMPACT DAMPER FOR NARROW INSTALLATION SITUATIONS



ACTIVATORS

Activators available on request

Strong and slim: **Silento Delicato** represents the perfect damper for drawers and sliding doors. Universally-applicable thanks to upright and vertical installation.

Self-Closing Unit with fluid damping
Weight to brake gently: up to 70 kg

PRODUCT CHARACTERISTICS

- ▶ Suitable for drawers and sliding doors
- ▶ 3 versions:
25 kg, 50 kg and 70 kg requiring soft-braking
- ▶ Retrofittable
- ▶ Can be installed in the smallest-possible of spaces
- ▶ Can be fitted vertically and horizontally
- ▶ Soft closing makes for quiet operation
- ▶ Easy-to-install, can be replaced easily
- ▶ Simple, flexible fitting and operation

Technical data

Housing length [mm]	Housing width [mm]	Housing* height [mm]	Clearance Fixing points [mm]	Stroke [mm]	Weight to brake gently [kg]	Medium
Silento Delicato		Order no.: E050-08-033/25 kg, E050-08-080/50 kg, E050-08-088/70 kg				
298	12	22/31.5	288	50	25/50/70	Fluid

* without/with lock lever

SILENTO CHIUSO

CLOSED DAMPING UNIT IN 4 SELF-CLOSING VERSIONS



Silento Chiuso 70



Silento Chiuso Lungo 100
with extension

ACTIVATORS



Activator
D000-00-031

Activator
D000-00-034

Activator
D000-00-035

Compact, rigid plastic housing for various installation situations. The easy-to-install self-closing system is suitable for sliding door systems and enables reduced opening dimensions in furniture.

Self-Closing Unit with fluid damping

Weight to brake gently: up to 70 kg

PRODUCT CHARACTERISTICS

- ▶ Suitable for sliding doors, closed unit, 3 activators
- ▶ 4 sizes in three versions:
30 kg, 50 kg and 70 kg requiring soft-braking
- ▶ Retrofittable, outwards closing
- ▶ Excellent damping qualities with a compact structure
- ▶ Diverse product range brings a variety of flexible applications
- ▶ Different weight classes with identical exterior dimensions
- ▶ Extension hole matrix for fixing with Chiuso Lungo 100

Technical data						
Housing length [mm]	Housing width [mm]	Housing* height [mm]	Clearance Fixing points [mm]	Stroke [mm]	Weight to brake gently [kg]	Medium
Silento Chiuso 50		Order no.: E050-08-058/30 kg, E050-08-069/50 kg, E050-08-070/70 kg				
222	15	36/44.7	192	50	30/50/70	Fluid
Silento Chiuso 70		Order no.: E070-08-007/30 kg, E070-08-009/50 kg, E070-08-010/70 kg				
254	15	36.3/44.7	224	70	30/50/70	Fluid
Silento Chiuso 100		Order no.: E100-08-010/30 kg, E100-08-012/50 kg, E100-08-013/70 kg				
318	15	36.3/44.7	288	100	30/50/70	Fluid
Silento Chiuso Lungo 100		Order no.: E100-08-014/30 kg, E100-08-015/50 kg, E100-08-016/70 kg				
342	15	36.3/44.7	320	100	30/50/70	Fluid

* without/with lock lever

RETRO 4 FLUIDO

RETRO GOES FLUID DAMPING – FOR INCREASED LOADS



ACTIVATORS



Activator
D000-00-032



Activator
D000-00-033

The new **Retro 4 Fluido** extends the Retro 4 product range by the addition of an innovative fluid damper for greater forces and even greater performance in the sliding and soft closing of drawers and sliding doors.

Self-Closing Unit with fluid damping Weight to brake gently: up to 50 kg

PRODUCT CHARACTERISTICS

- ▶ Suitable for drawers and sliding doors
- ▶ 3 versions:
15 kg, 30 kg and 50 kg requiring soft-braking
- ▶ 2 activators
- ▶ High-performance, top quality
- ▶ Improved product characteristics from Soft Close fluid damping
- ▶ Horizontal and vertical fixing holes
- ▶ Retrofittable
- ▶ Soft closing makes for quiet operation
- ▶ Simple, flexible fitting and operation

Technical data

Housing length [mm]	Housing width [mm]	Housing* height [mm]	Clearance Fixing points [mm]	Stroke [mm]	Weight to brake gently [kg]	Medium
Retro 4 Fluido			Order no.: E050-08-054/15 kg, E050-08-086/30 kg, E050-08-087/50 kg			
237	10,4	17.3/23.8	224	50	15/30/50	Fluid

* without/with lock lever

TECHNOLOGIES

The Zimmer Group has bundled its expertise in six areas – Handling Technology, Damping Technology, Linear Technology, Process Technology, Tooling Technology and Machine Tooling Technology – in which it has established itself as a world-leader.



**HANDLING
TECHNOLOGY**



**DAMPING
TECHNOLOGY**



**LINEAR
TECHNOLOGY**



**PROCESS
TECHNOLOGY**



**TOOLING
TECHNOLOGY**



**MACHINE TOOLING
TECHNOLOGY**