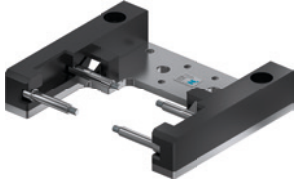


放置架

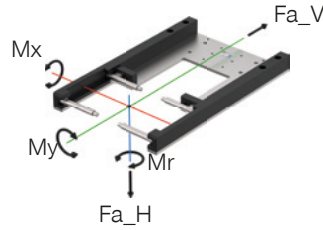
ALSR1-50-B

产品规格



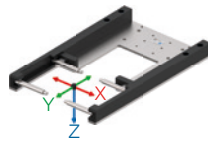
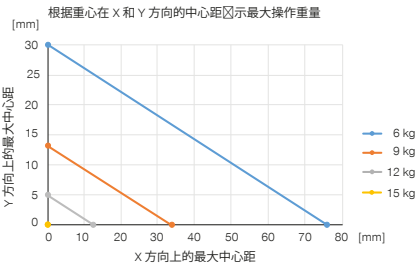
力和力矩

显示基于非固定端而可能作用于放置架的静态力和力矩

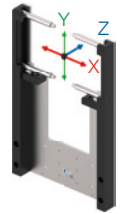
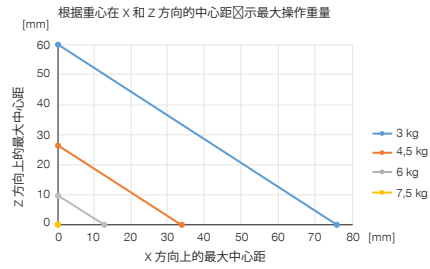


Mr [Nm]	2
Mx [Nm]	3
My [Nm]	7
Fa_H [N]	150
Fa_V [N]	75

卧式结构



立式结构



配件建议



传感器



NJ5-E2
接近开关电缆5m-直接出线



传感器



NJ5-E2SK
接近开关电缆 0.3m - M8接头



订购编号

适合多种结构尺寸

重量 [kg]

▶ 技术数据

ALSR1-50-B

WWR50L-B

1.2

