

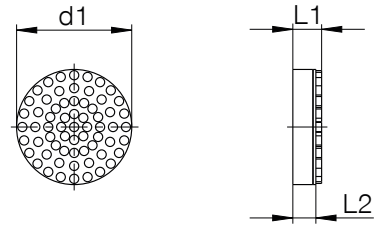
VALVES, FITTINGS, ACCESSORIES

JAW ACCESSORIES

► SERIES DG - RUBBER JAW PADS



- Available in different versions
- A packaging unit includes 6 pcs.



Order no.

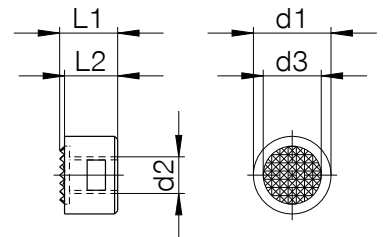
	DG6	DG6SI	DG10	DG10SI	DG16	DG16SI	DG20	DG20SI
Ø d1 [mm]	6m6	6m6	10m6	10m6	16m6	16m6	20m6	20m6
Dimension L1 [mm]	5	5	5	5	5	5	5	5
Dimension L2 [mm]	3.5	3.5	3.5	3.5	3.5	3.5	3.5	3.5
Material	NBR	Silicone	NBR	Silicone	NBR	Silicone	NBR	Silicone
Color	Black	Blue	Black	Blue	Black	Blue	Black	Blue
Operating temperature max. [°C]	120	200	120	200	120	200	120	200
Shore hardness	65 +/- 3	60 +/- 5	65 +/- 3	60 +/- 5	65 +/- 3	60 +/- 5	65 +/- 3	60 +/- 5

► Technical Data

► SERIES GR - HARD JAW INSERTS



- Available in different versions



Order no.

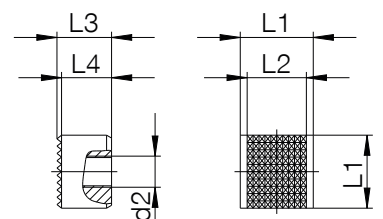
	GR4	GR4A	GR4C	GR5	GR6
Ø d1 [mm]	12,7	12,7	12,7	15,8	19
Ø d2 [mm]	M6	M6	M6	M6	M6
Ø d3 [mm]	9.5	9.5	9.5	12.7	15.8
Dimension L1 [mm]	9.5	12.7	16.5	9.5	9.5
Dimension L2 [mm]	8.7	11.9	15.8	8.7	8.7

► Technical Data

► SERIES GR - HARD JAW INSERTS



- Available in different versions



Order no.

	SG4
Ø d2 [mm]	M6
Dimension L1 [mm]	12.7
Dimension L2 [mm]	10.3
Dimension L3 [mm]	9.5
Dimension L4 [mm]	8.7

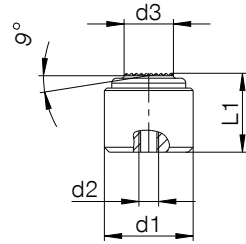
► Technical Data



► SERIES J - HARD JAW INSERTS, FLOATING



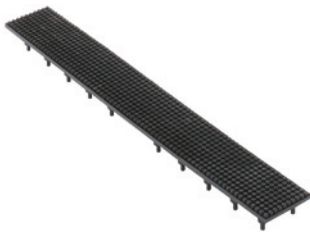
- Available in different versions



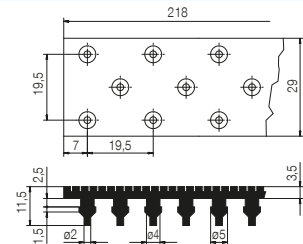
► Technical Data

Order no.	J712	J718	J728
Ø d1 [mm]	12n6	18n6	28n6
Ø d2 [mm]	M3	M4	M5
Ø d3 [mm]	7	10	20
Dimension L1 [mm]	10	16	25

► SERIES GU - RUBBER JAW LINERS



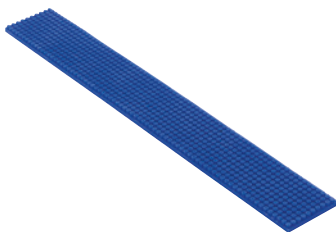
- Available in different versions
- GU1: Basic jaw with infeed knobs
- Receiver holes for infeed knobs - 4.5 mm



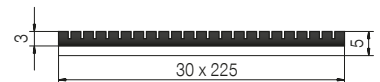
► Technical Data

Order no.	GU1	GU1SI
Resistance DIN53504 min. [N/mm ²]	10	10
Material	NBR	Silicone
Color	Black	Blue
Operating temperature max. [°C]	120	200
Shore hardness	65 +/- 3	60 +/- 5

► SERIES GU - RUBBER JAW LINERS



- Available in different versions
- Rubber jaw with baseplate made of aluminum



► Technical Data

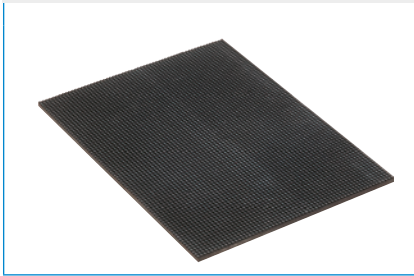
Order no.	GU2	GU2SI
Resistance DIN53504 min. [N/mm ²]	10	10
Material	NBR	Silicone
Color	Black	Blue
Operating temperature max. [°C]	120	200
Shore hardness	65 +/- 3	60 +/- 5



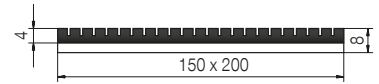
VALVES, FITTINGS, ACCESSORIES

JAW ACCESSORIES

► SERIES GU - RUBBER JAW LINERS



- Available in different versions
- Rubber jaw with baseplate made of aluminum



Order no.

Resistance DIN53504 min. [N/mm²]

Material

Color

Operating temperature max. [°C]

Shore hardness

► Technical Data

GU2G

10

NBR

Black

120

65 +/- 3

GU2GSI

10

Silicone

Blue

200

60 +/- 5

► SERIES KF - RUBBER COATED TAPE



- Smooth surface or knobbed surface Adjusts itself optimally to the shape of the gripper jaw ideal coefficients of friction and compensates for variation in tolerances
- Resistant against adhesive materials

Order no.

Size [mm]

Material

Surface

Material thickness [mm]

Max. permitted temperature [°C]

Tensile strength

Adhesive strength

► Technical Data

KF50G

500 x 100

Impregnated cotton fabric with special coating

smooth

0.48

+60 (briefly up to +100 °C)

0.9

22

KF50N

500 x 100

Impregnated cotton fabric with special coating

knobbed

0.48

+60 (briefly up to +100 °C)

0.9

22

► SERIES BGM - EPOXY JAW COMPOUND



- For your individual gripper jaws in a few steps
- Hard as metal and can be used for the most sensitive parts due to silicone filling
- Sufficient for approximately 10 medium-sized jaw cups

Order no.

Version

► Technical Data

BGM-H

Epoxy jaw compound

BGM-W

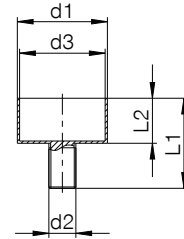
Silicone compound



► SERIES BN - JAW CUPS FOR EPOXY JAW COMPOUND



► Jaw Cups for Epoxy Jaw Compound (BGM)



Order no.

Ø d1 [mm]

Ø d2 [mm]

Ø d3 [mm]

Dimension L1 [mm]

Dimension L2 [mm]

► Technical Data

	BN8	BN12	BN16	BN20
Ø d1 [mm]	6	10	16	20
Ø d2 [mm]	M3	M4	M5	M6
Ø d3 [mm]	5	9	15	19
Dimension L1 [mm]	8	12	16	20
Dimension L2 [mm]	4	6	8	10

► SERIES GU800 - RUBBER MOULDING COMPOUND



- For complicated gripper fingers with boreholes, seals and roller coatings
- Repairs to conveyor belts, solid rubber tires, transport casters, pipes, vibration protection on machines and insulation protection

Order no.

Mix ratio

Shore hardness level after hardening (ISO 868)

Sealed

Tensile strength (ISO 37) [N/mm²]

Elongation at break (ISO 37)

Tear resistance (DIN 53356)

Permitted temperature range [°C]

► Technical Data

GU800

100:80

80

1.00

8 MPA

600

15

-60 ... +90