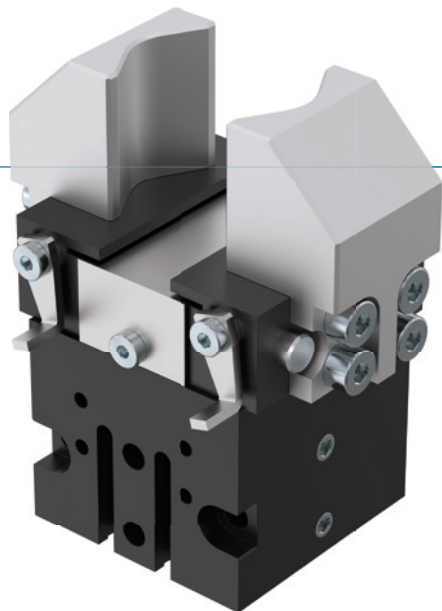


# 2-JAW PARALLEL GRIPPERS

## SERIES GP

### ▶ PRODUCT ADVANTAGES



#### “The enduring”

##### ▶ Proven technology

We have more than 20 years of proven reliability, which ensures uninterrupted production for you







##### ▶ Very short cycle times

Low-friction circular guides enable very short cycle times and, therefore, high component output for your machine

##### ▶ Failure-free continuous operation

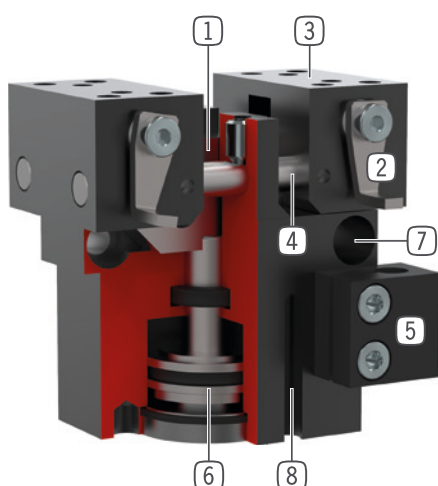
Our uncompromising “Made in Germany” quality guarantees up to 10 million maintenance-free cycles

### ▶ SERIES CHARACTERISTICS

| Installation size   | Version |       |
|---|---------|-------|
| GPXXX   | -C/D    | S-C/D |
|  Spring closing C                          |         | •     |
|  High-strength S                           |         | •     |
|  10 million maintenance-free cycles (max.) | •       | •     |
|  Inductive sensor                          | •       | •     |
|  Magnetic field sensor                     | •       | •     |
|  IP30                                      | •       | •     |



## ► BENEFITS IN DETAIL



- ① **Wedge hook mechanism**
  - synchronized the movement of the gripper jaws
  - high force transfer
- ② **Adjustable switch cam**
  - for position sensing
- ③ **Gripper jaw**
  - individual gripper finger mounting
- ④ **Roller slide**
  - for low wear movement sequence
- ⑤ **Mounting block**
  - mounting for inductive proximity switch
- ⑥ **Drive**
  - double-acting pneumatic cylinder
- ⑦ **Mounting and positioning**
  - mounting possible from several sides for versatile positioning
- ⑧ **Sensing slot**
  - mounting and positioning of magnetic field sensors

## ► TECHNICAL DATA

| Installation size | Stroke per jaw [mm] | Gripping force [N] | Weight [kg] | IP class |
|-------------------|---------------------|--------------------|-------------|----------|
| GP12              | 3                   | 8,4                | 0.033       | IP30     |
| GP19              | 4                   | 36                 | 0.081       | IP30     |
| GP30              | 5                   | 94                 | 0.15        | IP30     |
| GP45              | 5                   | 118 - 190          | 0.255 - 0.3 | IP30     |
| GP75              | 10                  | 220 - 275          | 0.45 - 0.5  | IP30     |
| GP100             | 8 - 13              | 450 - 5250         | 1.3         | IP30     |

## ► FURTHER INFORMATION IS AVAILABLE ONLINE



All information just a click away at: [www.zimmer-group.com](http://www.zimmer-group.com). Find data, illustrations, 3D models and operating instructions for your installation size using the order number for your desired product. Quick, clear and always up-to-date.

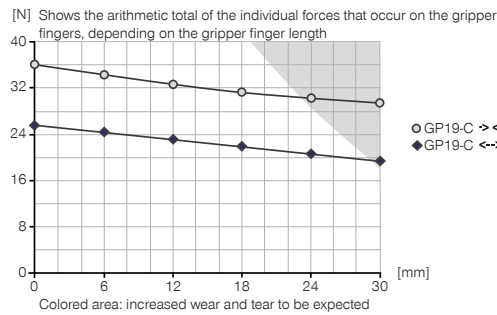
# 2-JAW PARALLEL GRIPPERS

## INSTALLATION SIZE GP19

### ▶ PRODUCT SPECIFICATIONS

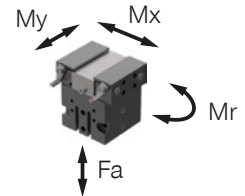


#### ▶ Gripping force diagram



#### ▶ Forces and moments

Displays static forces and moments that can also have an effect, besides the gripping force.



|         |     |
|---------|-----|
| Mr [Nm] | 0.8 |
| Mx [Nm] | 0.8 |
| My [Nm] | 0.8 |
| Fa [N]  | 40  |

### ▶ RECOMMENDED ACCESSORIES



#### GRIPPING COMPONENTS



**UB19**  
Universal jaw set aluminium



#### SENSORS



**NJ3-E2SK**  
Inductive Proximity Switch Cable 0,3 m - Connector M8



**MFS01-S-KHC-P1-PNP**  
Magnetic field sensor angled, cable 0.3 m - M8 connector



**MFS02-S-KHC-P1-PNP**  
Magnetic field sensor straight, cable 0.3 m - M8 connector



**MFS01-S-KHC-P2-PNP**  
2-point sensor angled, cable 0.3 m - M8 connector



**MFS02-S-KHC-P2-PNP**  
2-point sensor straight, cable 0.3 m - M8 connector



**MFS02-S-KHC-IL**  
Position sensor straight, cable 0.3 m - connector M8



#### ENERGY SUPPLY



**GVM5**  
Straight Fittings - Quick Connect Style



**WVM5**  
Angled Fittings - Quick Connect Style



**DEV04**  
Quick Exhaust Valve



**DSV1-8E**  
Pressure safety valve with quick exhaust



#### SENSORS



**KB3**  
Mounting block



**NJ3-E2**  
Inductive proximity switch - Cable 5 m



#### CONNECTIONS / OTHER



**KAG500**  
Plug-in connector Straight Cable 5m - Socket M8 (female)



**ZE12H7X4**  
Centering Disc

| Order no.                                 | GP19-C |
|---|--------|
| Stroke per jaw [mm]                       | 4      |
| Gripping force in closing [N]             | 36     |
| Gripping force in opening [N]             | 26     |
| Gripping force secured by spring min. [N] |        |
| Closing time [s]                          | 0.02   |
| Opening time [s]                          | 0.02   |
| Repetition accuracy +/- [mm]              | 0.05   |
| Operating pressure min. [bar]             | 3      |
| Operating pressure max. [bar]             | 8      |
| Nominal operating pressure [bar]          | 6      |
| Operating temperature min. [°C]           | +5     |
| Operating temperature max. [°C]           | +80    |
| Air volume per cycle [cm³]                | 1.0    |
| Protection to IEC 60529                   | IP30   |
| Weight [kg]                               | 0.085  |

► Technical data

