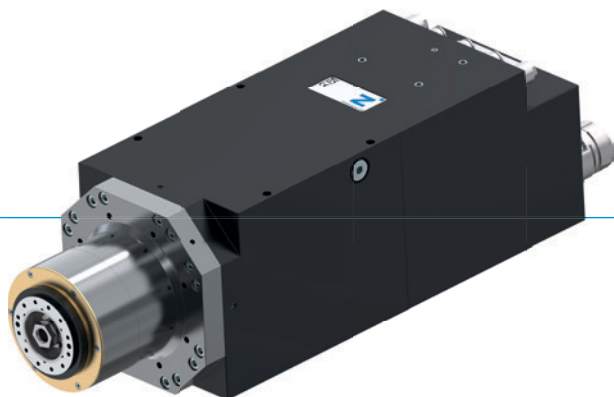


# MOTOR SPINDLES

## HF150-003-001

### ▶ PRODUCT ADVANTAGES



- ▶ **Rated power S1: 14.5 kW**  
**Rated torque S1: 14.7 Nm**  
**Max. speed: 26,000 rpm**
- ▶ Water cooling
- ▶ IO-Link communication
- ▶ Designed as unit carrier
- ▶ Hybrid bearings used for maximum performance
- ▶ Ideal for processing wood, plastics, lightweight metal and composites
- ▶ Vector controlled

### ▶ EQUIPMENT FEATURES



Conus cleanig of tool fixation



Labyrinth seal



Tool fixation monitoring



Sealing air



Speed monitoring



Automatic tool change



Controllable air connectors



Vector controlled / feedback



IO-Link

### ▶ OPTIONS



Aggregate interface



Bearing temperature sensor

### ▶ ACCESSORIES



Frequency inverter

Page 41



Control units

Page 41



Adapter  
Frequency inverter

Page 41



Cooling units/  
connector set

Page 42



Power lines

Page 43



Signal lines

Page 43



Encoder lines

Page 43

## ▶ TECHNICAL DATA

### ▶ HF150-003-001

Three phase asynchron motor, 4-poles

<b>Nominal output S1 [kW]</b>	14.5
<b>Rated torque S1 [Nm]</b>	14.7
<b>Nominal current S1 [A]</b>	30.0
<b>Nominal speed</b>	9.450
<b>Maximum speed</b>	26,000
<b>Tool interface</b>	HSK-F63
<b>Motor technology</b>	Asynchronous
<b>Number of poles</b>	4
<b>Release unit</b>	Pneumatic
<b>Cooling</b>	Water
<b>Weight [kg]</b>	33

### ▶ Interface Diagram

	Interface
<b>A</b>	Tool unlocked
<b>AZ</b>	Tool clamping
<b>E, F</b>	Cooling system inlet and outlet
<b>KR</b>	Conus cleaning
<b>SPL</b>	Sealing air
<b>XD1</b>	Power and signal connector
<b>XG2</b>	Signal connector
<b>XG3</b>	Position and speed sensor

