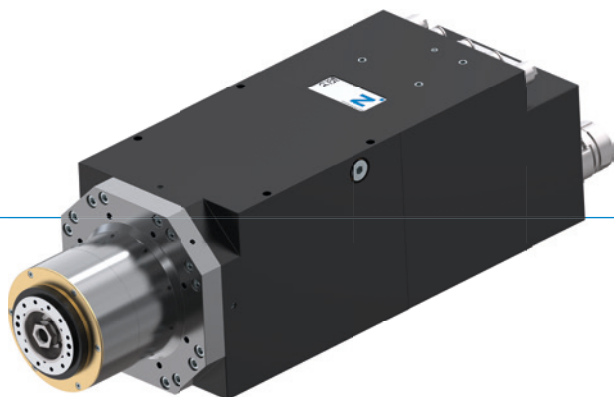


MOTOR SPINDLES

HF150-003-003

▶ PRODUCT ADVANTAGES



- ▶ **Rated power S1: 14.5 kW**
Rated torque S1: 14.7 Nm
Max. speed: 26,000 rpm
- ▶ Water cooling
- ▶ IO-Link communication
- ▶ Designed as unit carrier
- ▶ Hybrid bearings used for maximum performance
- ▶ Ideal for processing wood, plastics, lightweight metal and composites

▶ EQUIPMENT FEATURES



Conus cleanig of tool fixation



Labyrinth seal



Tool fixation monitoring



Sealing air



Speed monitoring



Automatic tool change



Controllable air connectors



IO-Link

▶ OPTIONS



Aggregate interface



Bearing temperature sensor



Vector controlled / feedback

▶ ACCESSORIES



Frequency inverter

Page 41



Control units

Page 41



Adapter
Frequency inverter

Page 41



Cooling units/
connector set

Page 42



Power lines

Page 43



Signal lines

Page 43



Encoder lines

Page 43

▶ TECHNICAL DATA

▶ HF150-003-003

Three phase asynchron motor, 4-poles

Nominal output S1 [kW]	14.5
Rated torque S1 [Nm]	14.7
Nominal current S1 [A]	30.0
Nominal speed	9.450
Maximum speed	26,000
Tool interface	HSK-F63
Motor technology	Asynchronous
Number of poles	4
Release unit	Pneumatic
Cooling	Water
Weight [kg]	33

▶ Interface Diagram

	Interface
A	Tool unlocked
AZ	Tool clamping
E, F	Cooling system inlet and outlet
KR	Conus cleaning
SPL	Sealing air
XD1	Power and signal connector
XG2	Signal connector

