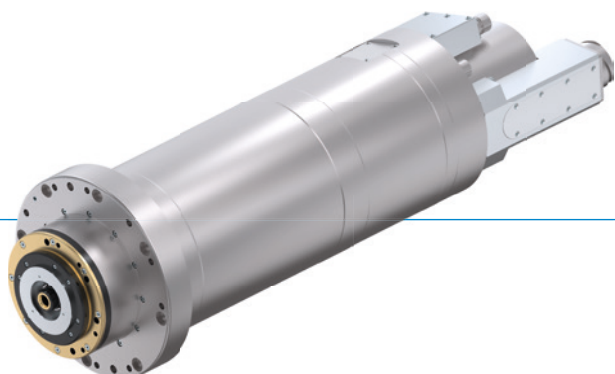


# MOTOR SPINDLES

## HF205-006-002

### ▶ PRODUCT ADVANTAGES



- ▶ **Rated power S1: 48 kW**  
**Rated torque S1: 153 Nm**  
**Max. speed: 6,000 rpm**
- ▶ Water cooling
- ▶ Hybrid bearings used for maximum performance
- ▶ Adapted for use in tooling machines
- ▶ Ideal for processing brass, aluminum, steel and cast iron
- ▶ Very high power density (synchronous motor)
- ▶ Very high torque (synchronous motor)

### ▶ EQUIPMENT FEATURES



Conus cleanig of tool fixation



Coolant through shaft



Labyrinth seal



Tool fixation monitoring



Purged air-seal



Automatic tool change



Vector controlled / feedback

### ▶ OPTIONS



Acceleration sensor

### ▶ ACCESSORIES

We would be glad to help you select and configure the right accessories.

## ▶ TECHNICAL DATA

### ▶ HF205-006-002

Three phase synchron motor, 6-poles

Nominal output S1 [kW]	48.0
Rated torque S1 [Nm]	153.0
Nominal current S1 [A]	116.0
Nominal speed	3.000
Maximum speed	6.000
Tool interface	HSK-A63
Motor technology	Synchronous
Number of poles	6
Release unit	Hydraulic
Cooling	Water
Weight [kg]	130

### ▶ Interface Diagram

	Interface
A	Tool unlocked
AZ	Tool clamping
E, F	Cooling system inlet and outlet
IKZ	Coolant through shaft
KR	Conus cleaning
SPL	Sealing air
XD1	Power and signal connector
XG2	Signal connector
XG3	Position and speed sensor

