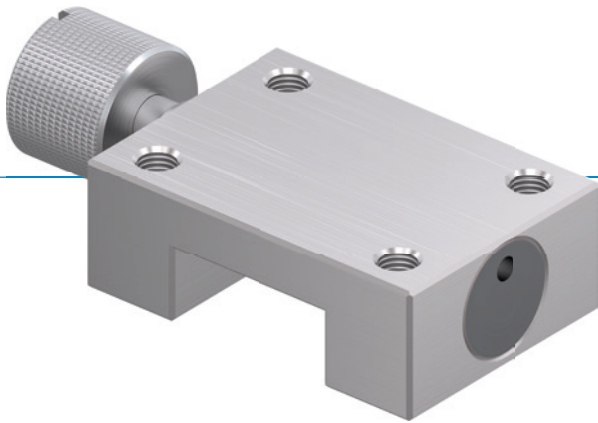


# CLAMPING ELEMENTS | MANUAL

## SERIES MINIHK

### ▶ PRODUCT ADVANTAGES



- ▶ **small construction**  
For all common miniature profile rail guides
- ▶ **Tool-free opening and closing (bi-stable)**  
By turning the knurled screw
- ▶ **Maintenance free**  
Up to 50,000 static clamping cycles

### ▶ BENEFITS IN DETAIL

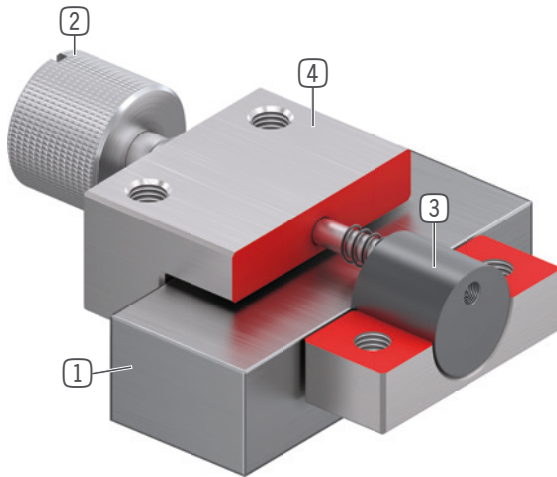
#### APPLICATION SCENARIOS

- ▶ **Assembly aids**
- ▶ **Optical equipment**
- ▶ **Medical equipment**

#### FURTHER INFORMATION

- ▶ **Spacer plate**  
In addition, a spacer plate might have to be ordered as height compensation, depending on the height of the rail carriage (dimension D).

## ► INFORMATION ON THE SERIES



- ① **Miniature profile rail guide**  
- Available for all common miniature profile rail guides
- ② **Stainless knurled screw**  
- For opening and closing the clamping unit
- ③ **Clamping jaw**  
- The floating bearings guarantee symmetrical application of force
- ④ **Housing**

## ► THE BEST PRODUCT FOR YOUR APPLICATION

Series	► Technical data
Series	<b>MiniHK</b>
Rail size	5-42 mm
Holding force	40-300 N
Clamping torque knurled screw	0,07-2,5 Nm
Spring storage	inexistent
B10d value	up to 50 000
Dynamic braking cycles	not suitable
Operation	manual
Operating temperature	-10 ... +70 [°C]