

UCHWYTY ZACISKKOWE

SERIA KB

► SPECYFIKACJE PRODUKTOWE

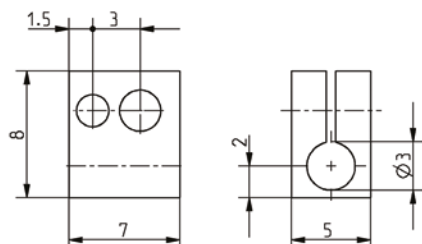


- Do mocowania czujników indukcyjnych
- Dostępne od 3 mm

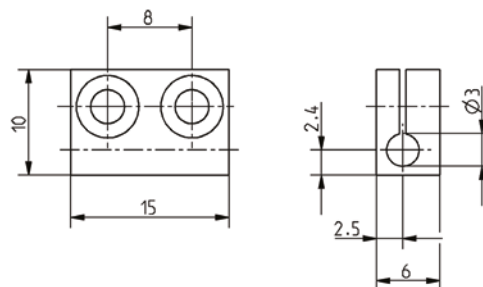
► Dane techniczne

| Nr katalogowy | KB3 | KB3M | KB4 | KB5 | KB6.5 | KB8 | KB12 |
|--|---------------------------|---------------------------|---------------------------|---------------------------|---------------------------|---------------------------|---------------------------|
| Pasuje do \varnothing czujnika. [mm] | 3 | 3 | 4 | 5 | 6.5 | 8 | 12 |
| Dopuszczenia | LABS / REACH / RoHS | LABS / REACH / RoHS | LABS / REACH / RoHS | LABS / REACH / RoHS | LABS / REACH / RoHS | LABS / REACH / RoHS | LABS / REACH / RoHS |
| Masa [kg] | 0.003 | 0.001 | 0.004 | 0.007 | 0.006 | 0.01 | 0.01 |

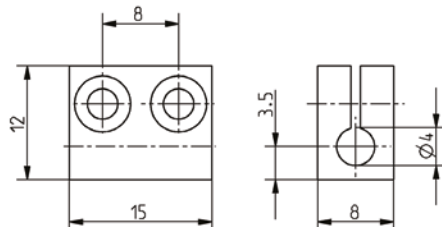
KB3M



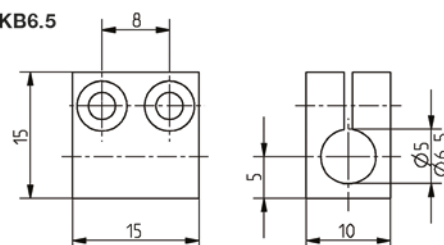
KB3



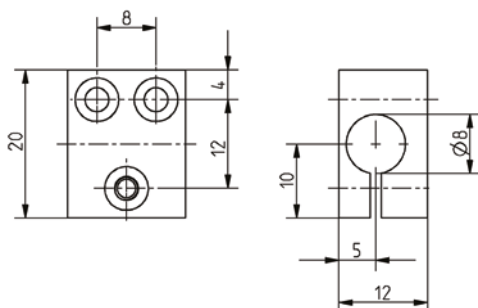
KB4



KB5 / KB6.5



KB8



KB12

