

MATCH - ROBOT MODULE

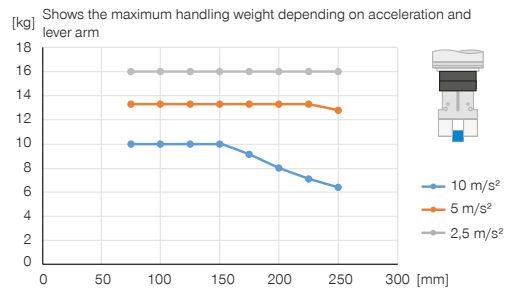
LWR50F-01-03-A

▶ PRODUCT SPECIFICATIONS



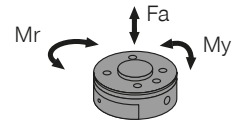
MATCH

▶ Vertical design with centered holding force



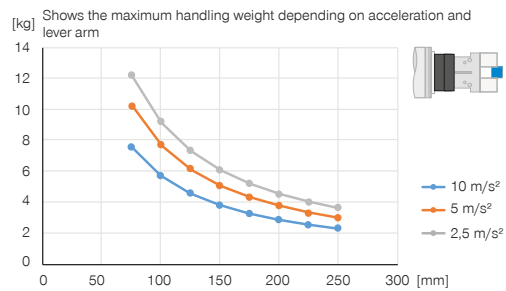
▶ Forces and moments

Shows static forces and moments



Mr [Nm]	20
My [Nm]	40
Fa [N]	500

▶ Horizontal design with centered holding force



▶ RECOMMENDED ACCESSORIES



GRIPPING COMPONENTS



LWR50L-02-00001-A
Match - Grippers



LWR50L-03-00001-A
Match - Grippers



LWR50L-22-00001-A
Match - Grippers



LWR50L-23-00002-A
Match - Grippers



CONNECTIONS / OTHER



WVM7
Angled Fittings - Quick Connect Style



ZUB123084
Strain relief

Order no.	Technical data
	LWR50F-01-03-A
Suitable for robot type	Universal Robots e-Series
Configuration for interface	Ethernet RJ45
Control	RS485
Connecting flange according EN ISO 9409-1	TK 50
Status display	Yes
Handling weight max. [kg]	25
Connecting cable	Plug, M8, 8-pole
Locking stroke [mm]	1
Electrical energy transfer	integrated
Pneumatic energy transfer	integrated
Tightening force [N]	50
Release force [N]	0
Repetition accuracy in X, Y [mm]	0.05
Repetition accuracy in Z [mm]	0.05
Offset at coupling max. in X,Y [mm]	1.0
Operating temperature [°C]	5 ... +60
Service life in cycles	100,000
Protection to IEC 60529	IP40
Weight [kg]	0.43

