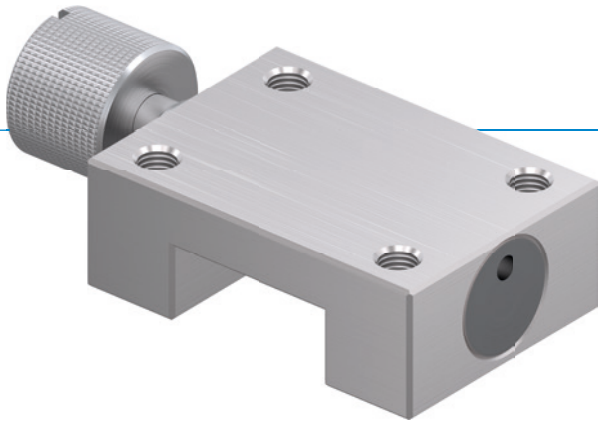


CLAMPING ELEMENTS | MANUAL SERIES MINIHK

▶ PRODUCT ADVANTAGES



- ▶ **small construction**
For all common miniature profile rail guides
- ▶ **Tool-free opening and closing (bi-stable)**
By turning the knurled screw
- ▶ **Maintenance free**
Up to 50,000 static clamping cycles

▶ THE BEST PRODUCT FOR YOUR APPLICATION

APPLICATION SCENARIOS

- ▶ **Assembly aids**
- ▶ **Optical equipment**
- ▶ **Medical equipment**

FURTHER INFORMATION

- ▶ **Spacer plate**
In addition, a spacer plate might have to be ordered as height compensation, depending on the height of the rail carriage (dimension D).

► BENEFITS IN DETAIL

1 Miniature profile rail guide

- Available for all common miniature profile rail guides

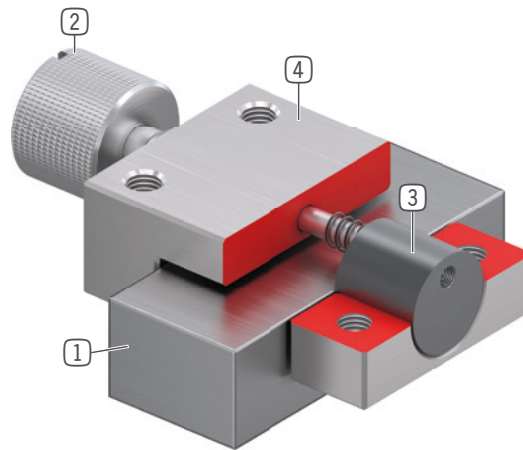
2 Stainless knurled screw

- For opening and closing the clamping unit

3 Clamping jaw

- The floating bearings guarantee symmetrical application of force

4 Housing



► INFORMATION ON THE SERIES

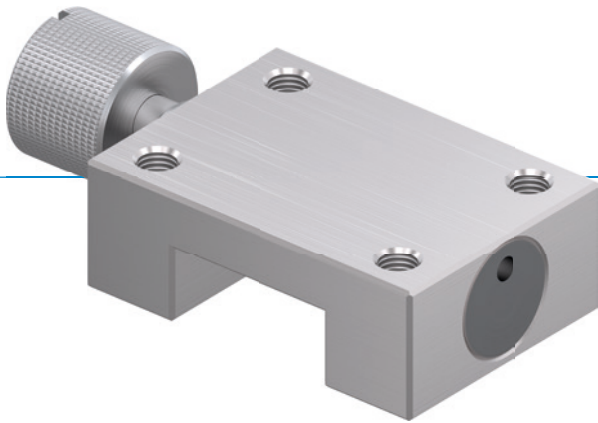
TECHNICAL DATA

Rail size	5-42 mm
Holding force	40-300 N
Clamping torque knurled screw	0,07-2,5 Nm
Spring storage	inexistent
B10d value	up to 50 000
Dynamic braking cycles	not suitable
Operation	manual
Operating temperature	-10 ... +70 [°C]

CLAMPING ELEMENTS | MANUAL

SERIES MINIHK

▶ PRODUCT ADVANTAGES



- ▶ **small construction**
For all common miniature profile rail guides
- ▶ **Tool-free opening and closing (bi-stable)**
By turning the knurled screw
- ▶ **Maintenance free**
Up to 50,000 static clamping cycles

▶ BENEFITS IN DETAIL

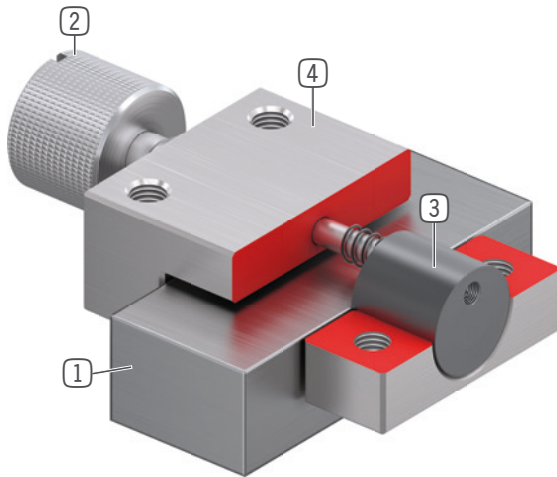
APPLICATION SCENARIOS

- ▶ **Assembly aids**
- ▶ **Optical equipment**
- ▶ **Medical equipment**

FURTHER INFORMATION

- ▶ **Spacer plate**
In addition, a spacer plate might have to be ordered as height compensation, depending on the height of the rail carriage (dimension D).

► INFORMATION ON THE SERIES



- ① **Miniature profile rail guide**
- Available for all common miniature profile rail guides
- ② **Stainless knurled screw**
- For opening and closing the clamping unit
- ③ **Clamping jaw**
- The floating bearings guarantee symmetrical application of force
- ④ **Housing**

► THE BEST PRODUCT FOR YOUR APPLICATION

Series	► Technical data
Series	MiniHK
Rail size	5-42 mm
Holding force	40-300 N
Clamping torque knurled screw	0,07-2,5 Nm
Spring storage	inexistent
B10d value	up to 50 000
Dynamic braking cycles	not suitable
Operation	manual
Operating temperature	-10 ... +70 [°C]