

# INDUSTRIAL SHOCK ABSORBERS POWERSTOP THREAD M10X1

## ► SERIES

PowerStop®



► <b>Material</b>	Stainless steel	► <b>Organic oil (biodegradable)</b>	HEES
► <b>Permitted temperature range</b>	-10 ... +70 [°C]	- <b>H1-certified</b>	Yes
► <b>Angle of Impact max.</b>	2 [°]	- <b>PWIS-free</b>	Yes
► <b>Max. force at fixed stop</b>	2 [kN]	► <b>RoHS compliant</b> - <b>REACH compliant</b>	Yes
► <b>Lock nut tightening torque</b>		► <b>Max. absolute pressure</b>	
- <b>Standard energy</b>	4 [Nm]	- <b>Standard energy</b>	1 [bar]
- <b>High Energy</b>	4 [Nm]	- <b>High Energy</b>	10 [bar]
- <b>Adjustable Energy</b>	4 [Nm]	- <b>Adjustable Energy</b>	10 [bar]

## ► TECHNICAL DATA

	Design	Series	Thread	Stroke variant	Stroke max. [mm]	Hardness degree	Impact velocity		Energy absorption max.			Protection	Reset			Head Integrated Fix stop	Version	
							min.	max.	Continuous operation		Emergency stop operation		min.	max.	max.			
									per stroke	per hour								per stroke
[m/s]	[m/s]	[J]	[J/h]	[J]	[N]	[N]	[s]											
STANDARD ENERGY	P	SE	10X10	N	8	H	0,1	1,2	3	22.000	3	D	2	4	0,2	D	x	
							M	0,8	2,2	3	22.000	3	F	2	4	0,2	E	-
							S	1,8	3,5	3	22.000	3	A	2	4	0,2	S	x
							W	3,0	5,0	3	22.000	3	B	2	9	0,2	K	x
HIGH ENERGY	P	HE	10X10	N	8	H	0,1	1,2	10	22.000	13	D	3,5	6	0,2	D	x	
							M	0,8	2,2	10	22.000	13	F	3,5	6	0,2	E	-
							S	1,8	3,5	9	22.000	11	A	3,5	6	0,2	S	x
							W	3,0	5,0	9	22.000	11	B	3,5	11	0,2	K	x
ADJUSTABLE ENERGY	P	AE	10X10	N	8	H	0,1	5,0	10	22.000	10	D	3,5	6	0,2	D	x	
							M	0,8	2,2	10	22.000	13	F	3,5	6	0,2	E	-
							S	1,8	3,5	9	22.000	11	A	3,5	6	0,2	S	x
							W	3,0	5,0	9	22.000	11	B	3,5	11	0,2	K	x

## PROTECTION

no protection	Felt ring	Wiper (NBR)	Bellow (TPE)
D -A	F -A	A -A	B -A
in a clean environment	against dust, chips, ...	against liquid, oil, ...	

## TECHNICAL DRAWINGS

	Short piston rod no head	Long piston rod no head	with steel head	with plastic head	with bellow and steel head	with bellow and plastic head
	N D -A	N E -A	N S -A	N K -A	N B S -A	N B K -A
STANDARD ENERGY	 54.5, M10x1, 7, 13, 2.5, 2.5, 4, 8, 46.5, 19g	 58, 8, 2.5, 46.5, 11.5, 19g	 61, 8, 6, 8.5, 6.5, 46.5, 21g	 61, 8, 6, 8.5, 6.5, 46.5, 21g	 65, 8, 6, 14, 10.5, 41, 23g	 65, 8, 6, 14, 10.5, 41, 23g
HIGH ENERGY	 56, M10x1, 7, 13, 2.5, 2.5, 4, 8, 48, 20g	 59.5, 8, 2.5, 48, 11.5, 20g	 62.5, 8, 6, 8.5, 6.5, 48, 22g	 62.5, 8, 6, 8.5, 6.5, 48, 22g	 66.5, 8, 6, 14, 10.5, 42.5, 24g	 66.5, 8, 6, 14, 10.5, 42.5, 24g
ADJUSTABLE ENERGY	 62.5, M10x1, 7, 1.3, 7, 13, 2.5, 2.5, 4, 8, 6.5, 48, 21g	 66, 8, 2.5, 48, 11.5, 21g	 69, 8, 6, 8.5, 6.5, 48, 23g	 69, 8, 6, 8.5, 6.5, 48, 23g	 73, 8, 6, 14, 10.5, 42.5, 25g	 73, 8, 6, 14, 10.5, 42.5, 25g

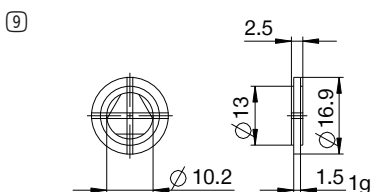
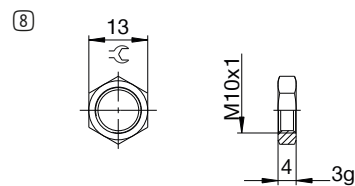
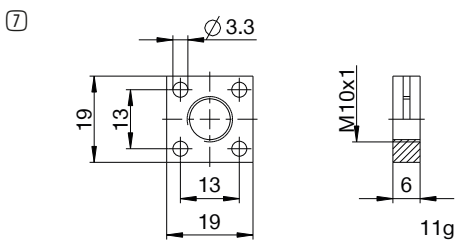
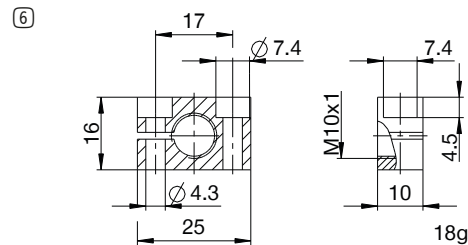
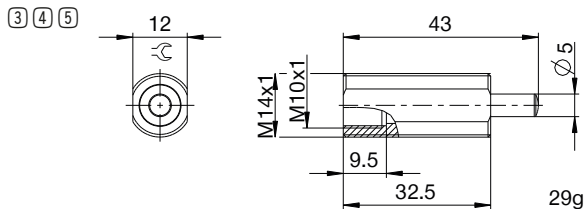
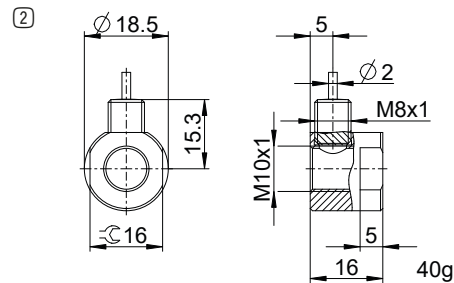
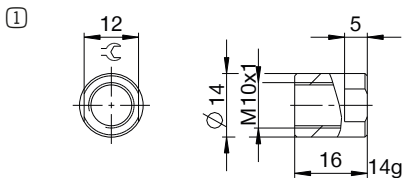


# INDUSTRIAL SHOCK ABSORBERS POWERSTOP

## THREAD M10X1

### ACCESSORIES

Pos.	Order no.	Accessories	Remarks
①	<b>PAH10X10-A</b>	Stop sleeve	Including 1x PVM10X10-A. Industrial shock absorber with bellow excluded.
②	<b>PSH10X10-B</b>	Sensor stop sleeve	Including 1x PVM10X10-A. Sensing only possible via industrial shock absorbers with steel or plastic head. Industrial shock absorber with bellow excluded. Inductive sensor, PNP (NC), 2 m PUR cable, IP67 degree of protection. See separate data sheet for additional information.
③	<b>PBV10X10ND-A</b>	Side load adapter standard stroke Protection: no protection	Impact angle max. 30°. Can only be used in combination with industrial shock absorber without protection and without the Short piston rod no head variant. Lock nut PVM14X10-A suitable for external thread of the side load adapter.
④	<b>PBV10X10NF-A</b>	Side load adapter standard stroke Protection: felt ring (felt)	Impact angle max. 30°. Can only be used in combination with industrial shock absorber without protection and without the Short piston rod no head variant. Lock nut PVM14X10-A suitable for external thread of the side load adapter.
⑤	<b>PBV10X10NA-A</b>	Side load adapter standard stroke Protection: wiper (NBR)	Impact angle max. 30°. Can only be used in combination with industrial shock absorber without protection and without the Short piston rod no head variant. Lock nut PVM14X10-A suitable for external thread of the side load adapter.
⑥	<b>PKS10X10-A</b>	Clamping flange orthogonal screwed	Tightening torque of the screws max. 3 Nm.
⑦	<b>PKP10X10-A</b>	Clamping flange screwed in parallel	Tightening torque of the screws max. 1 Nm.
⑧	<b>PVM10X10-A</b>	Stainless steel locknut	Included with the industrial shock absorber.
⑨	<b>PDD10X10-A</b>	Pressure chamber seal	Recommended fixation with PVM10X10-A. Seal must be in full contact on both sides.



## ▶ CLASSIFICATION

**P** **HE** **10X10** **N** **H** **B** **S** **-A**

### Design

**P** Industrial shock absorbers PowerStop

### Series

**ME** Mini Energy

**SE** Standard Energy

**HE** High Energy

**AE** Adjustable Energy

### Thread

**10** Thread nominal diameter

**X**

**10** Thread pitch (factor 10)

### Stroke variant

**N** Standard stroke

**L** Long stroke

### Hardness degree

**H** Hard (0.1 - 1.2 m/s; Adjustable Energy: 0.1 - 5 m/s)

**M** Medium (0.8 - 2.2 m/s)

**S** Soft (1.8 - 3.5 m/s)

**W** Supersoft (3 - 5 m/s)

### Protection

**D** no protection

**F** Felt ring

**A** Wiper (NBR)

**B** Bellow (TPE)

### Head

**D** Short piston rod no head

**E** Long piston rod no head

**S** with steel head

**K** with plastic head

### Version

**-A** Versioning from a to z