

INDUSTRIAL SHOCK ABSORBERS POWERSTOP THREAD M12X1

► SERIES

PowerStop®



► Material	Stainless steel	► Organic oil (biodegradable)	HEES
► Permitted temperature range	-10 ... +70 [°C]	- H1-certified	Yes
► Angle of Impact max.	2 [°]	- PWIS-free	Yes
► Max. force at fixed stop	3 [kN]	► RoHS compliant - REACH compliant	Yes
► Lock nut tightening torque		► Max. absolute pressure	
- Standard energy	7 [Nm]	- Standard energy	1 [bar]
- High Energy	7 [Nm]	- High Energy	10 [bar]
- Adjustable Energy	7 [Nm]	- Adjustable Energy	10 [bar]

► TECHNICAL DATA

	Design	Series	Thread	Stroke variant	Stroke max. [mm]	Hardness degree	Impact velocity			Energy absorption max.			Protection	Reset			Head Integrated Fix stop	Version	
							min.	max.	per stroke	per hour	per stroke	Force min. [N]		max. [N]	Time max. [s]				
																min.			max.
STANDARD ENERGY	P	SE	12X10	N	10	H	0,1	1,2	9	33.000	9	D	2,5	5	0,2	D	x		
							M	0,8	2,2	9	33.000	9	F	2,5	5	0,2	E	-	
								S	1,8	3,5	9	33.000	9	A	2,5	5	0,2	S	x
									W	3,0	5,0	9	33.000	9	B	2,5	17	0,2	K
HIGH ENERGY	P	HE	12X10	N	10	H	0,1	1,2	18	33.000	25	D	4,5	7,5	0,2	D	x		
							M	0,8	2,2	18	33.000	25	F	4,5	7,5	0,2	E	-	
								S	1,8	3,5	16	33.000	21	A	4,5	7,5	0,2	S	x
									W	3,0	5,0	16	33.000	21	B	4,5	19	0,2	K
ADJUSTABLE ENERGY	P	AE	12X10	N	10	H	0,1	5,0	18	33.000	18	D	4,5	7,5	0,2	D	x		
							M	0,8	5,0	18	33.000	18	F	4,5	7,5	0,2	E	-	
								S	1,8	5,0	18	33.000	18	A	4,5	7,5	0,2	S	x
									W	3,0	5,0	18	33.000	18	B	4,5	19	0,2	K

PROTECTION

no protection	Felt ring	Wiper (NBR)	Bellow (TPE)
D -A	F -A	A -A	B -A
in a clean environment	against dust, chips, ...	against liquid, oil, ...	

TECHNICAL DRAWINGS

	Short piston rod no head	Long piston rod no head	with steel head	with plastic head	with bellow and steel head	with bellow and plastic head
	N D -A	N E -A	N S -A	N K -A	N B S -A	N B K -A
STANDARD ENERGY	 64, 8, 15, 2.5, 5, 10, 3, 54, 30g	 68, 10, 3, 14, 54, 30g	 71, 10, 7, 10.5, 7, 54, 34g	 71, 10, 7, 10.5, 7, 54, 33g	 75, 10, 7, 16, 11, 47.5, 37g	 75, 10, 7, 16, 11, 47.5, 36g
HIGH ENERGY	 66, 8, 15, 2.5, 5, 10, 3, 56, 31g	 70, 10, 3, 14, 56, 31g	 73, 10, 7, 10.5, 7, 56, 35g	 73, 10, 7, 10.5, 7, 56, 34g	 77, 10, 7, 16, 11, 49.5, 38g	 77, 10, 7, 16, 11, 49.5, 37g
ADJUSTABLE ENERGY	 73, 1.3, 8, 15, 2.5, 5, 10, 3, 7, 56, 34g	 77, 10, 3, 14, 56, 34g	 80, 10, 7, 10.5, 7, 56, 38g	 80, 10, 7, 10.5, 7, 56, 37g	 84, 10, 7, 16, 11, 49.5, 41g	 84, 10, 7, 16, 11, 49.5, 40g

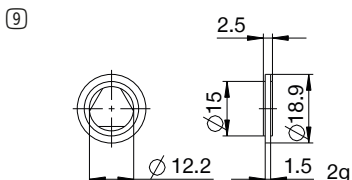
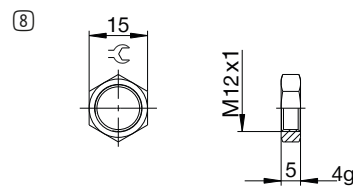
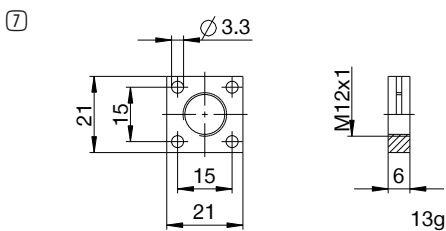
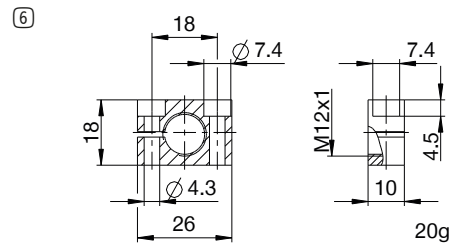
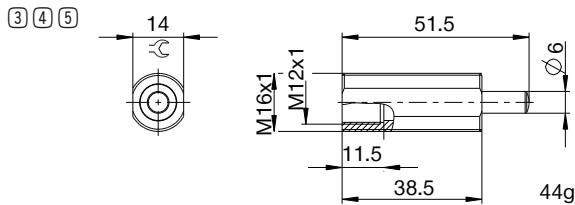
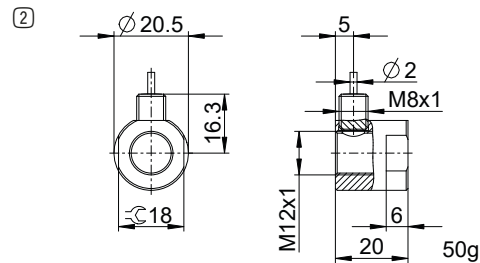
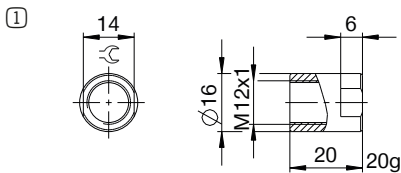


INDUSTRIAL SHOCK ABSORBERS POWERSTOP

THREAD M12X1

ACCESSORIES

Pos.	Order no.	Accessories	Remarks
①	PAH12X10-A	Stop sleeve	Including 1x PVM12X10-A. Industrial shock absorber with bellow excluded.
②	PSH12X10-B	Sensor stop sleeve	Including 1x PVM12X10-A. Sensing only possible via industrial shock absorbers with steel or plastic head. Industrial shock absorber with bellow excluded. Inductive sensor, PNP (NC), 2 m PUR cable, IP67 degree of protection. See separate data sheet for additional information.
③	PBV12X10ND-A	Side load adapter standard stroke Protection: no protection	Impact angle max. 30°. Can only be used in combination with industrial shock absorber without protection and without the Short piston rod no head variant. Lock nut PVM16X10-A suitable for external thread of the side load adapter.
④	PBV12X10NF-A	Side load adapter standard stroke Protection: felt ring (felt)	Impact angle max. 30°. Can only be used in combination with industrial shock absorber without protection and without the Short piston rod no head variant. Lock nut PVM16X10-A suitable for external thread of the side load adapter.
⑤	PBV12X10NA-A	Side load adapter standard stroke Protection: wiper (NBR)	Impact angle max. 30°. Can only be used in combination with industrial shock absorber without protection and without the Short piston rod no head variant. Lock nut PVM16X10-A suitable for external thread of the side load adapter.
⑥	PKS12X10-A	Clamping flange orthogonal screwed	Tightening torque of the screws max. 3 Nm.
⑦	PKP12X10-A	Clamping flange screwed in parallel	Tightening torque of the screws max. 1 Nm.
⑧	PVM12X10-A	Stainless steel locknut	Included with the industrial shock absorber.
⑨	PDD12X10-A	Pressure chamber seal	Recommended fixation with PVM12X10-A. Seal must be in full contact on both sides.



▶ CLASSIFICATION

P **HE** **12X10** **N** **H** **A** **K** **-A**

Design

P Industrial shock absorbers PowerStop

Series

ME Mini Energy

SE Standard Energy

HE High Energy

AE Adjustable Energy

Thread

12 Thread nominal diameter

X

10 Thread pitch (factor 10)

Stroke variant

N Standard stroke

L Long stroke

Hardness degree

H Hard (0.1 - 1.2 m/s; Adjustable Energy: 0.1 - 5 m/s)

M Medium (0.8 - 2.2 m/s)

S Soft (1.8 - 3.5 m/s)

W Supersoft (3 - 5 m/s)

Protection

D no protection

F Felt ring

A Wiper (NBR)

B Bellow (TPE)

Head

D Short piston rod no head

E Long piston rod no head

S with steel head

K with plastic head

Version

-A Versioning from a to z