

# INDUSTRIAL SHOCK ABSORBERS POWERSTOP THREAD M8X1

## ► SERIES

PowerStop®

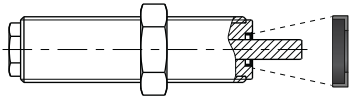
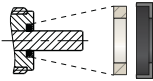
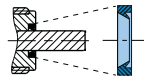
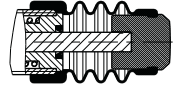


► <b>Material</b>	Stainless steel	► <b>Organic oil (biodegradable)</b>	HEES
► <b>Permitted temperature range</b>	-10 ... +70 [°C]	- <b>H1-certified</b>	Yes
► <b>Angle of Impact max.</b>	2 [°]	- <b>PWIS-free</b>	Yes
► <b>Max. force at fixed stop</b>	1 [kN]	► <b>RoHS compliant</b> - <b>REACH compliant</b>	Yes
► <b>Lock nut tightening torque</b>		► <b>Max. absolute pressure</b>	
- <b>Standard energy</b>	3 [Nm]	- <b>Standard energy</b>	1 [bar]
- <b>High Energy</b>	3 [Nm]	- <b>High Energy</b>	10 [bar]
- <b>Adjustable Energy</b>	3 [Nm]	- <b>Adjustable Energy</b>	10 [bar]

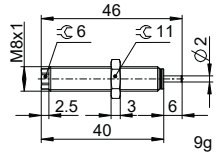
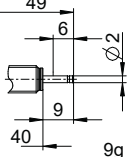
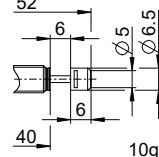
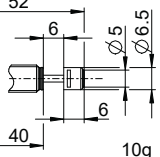
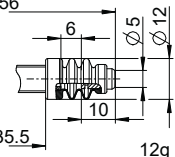
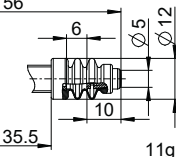
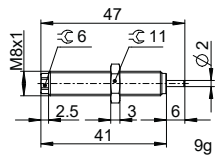
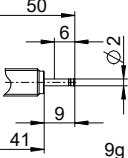
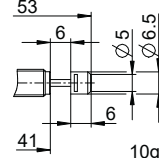
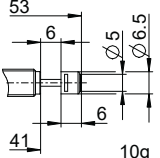
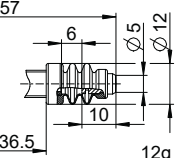
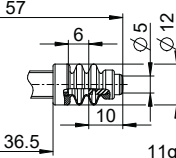
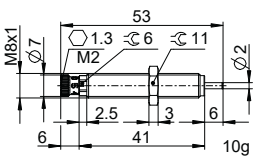
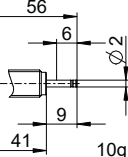
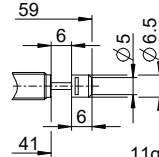
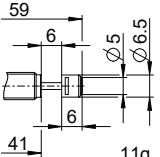
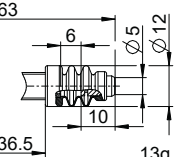
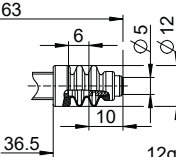
## ► TECHNICAL DATA

	Design	Series	Thread	Stroke variant	Stroke max. [mm]	Hardness degree	Impact velocity			Energy absorption max.			Protection	Reset			Head Integrated Fix stop	Version	
							min.	max.	per stroke	per hour	per stroke	Force min. [N]		Force max. [N]	Time max. [s]				
																min.			max.
STANDARD ENERGY	P	SE	08X10	N	6	H	0,1	1,2	1,5	10.000	1,5	D	1,5	3,0	0,2	D	x	-A	
							M	0,8	2,2	1,5	10.000	1,5	F	1,5	3,0	0,2	E		-
							S	1,8	3,5	1,5	10.000	1,5	A	1,5	3,0	0,2	S		x
							W	3,0	5,0	1,5	10.000	1,5	B	1,5	4,5	0,2	K		x
HIGH ENERGY	P	HE	08X10	N	6	H	0,1	1,2	4	10.000	5	D	2,5	4,5	0,2	D	x	-A	
							M	0,8	2,2	4	10.000	5	F	2,5	4,5	0,2	E		-
							S	1,8	3,5	3,5	10.000	4	A	2,5	4,5	0,2	S		x
							W	3,0	5,0	3,5	10.000	4	B	2,5	6,0	0,2	K		x
ADJUSTABLE ENERGY	P	AE	08X10	N	6	H	0,1	5,0	4	10.000	4	D	2,5	4,5	0,2	D	x	-A	
							M	0,8	2,2	4	10.000	4	F	2,5	4,5	0,2	E		-
							S	1,8	3,5	4	10.000	4	A	2,5	4,5	0,2	S		x
							W	3,0	5,0	4	10.000	4	B	2,5	6,0	0,2	K		x

## PROTECTION

D -A	F -A	A -A	B -A
			
in a clean environment	against dust, chips, ...	against liquid, oil, ...	

## TECHNICAL DRAWINGS

	Short piston rod no head	Long piston rod no head	with steel head	with plastic head	with bellow and steel head	with bellow and plastic head
	N D -A	N E -A	N S -A	N K -A	N B S -A	N B K -A
STANDARD ENERGY						
HIGH ENERGY						
ADJUSTABLE ENERGY						

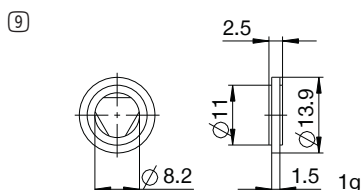
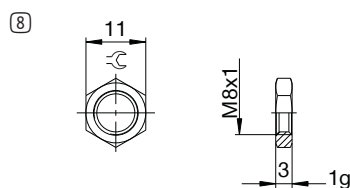
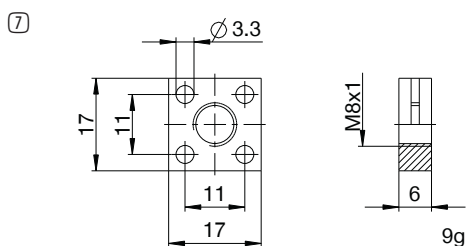
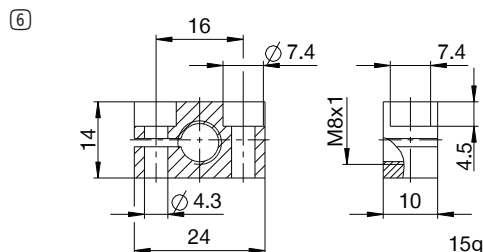
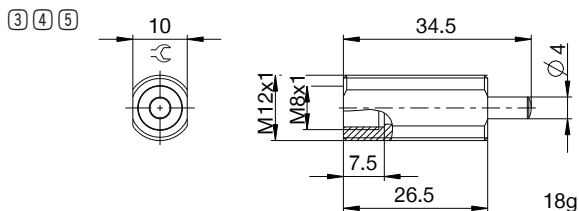
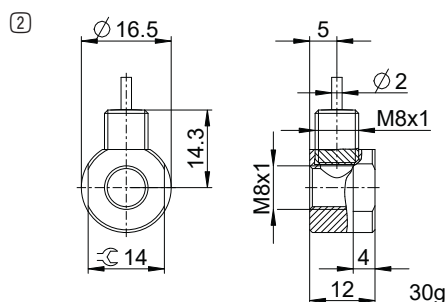
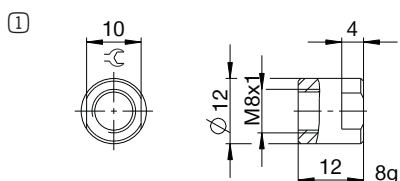


# INDUSTRIAL SHOCK ABSORBERS POWERSTOP

## THREAD M8X1

### ▶ ACCESSORIES

Pos.	Order no.	Accessories	Remarks
①	<b>PAH08X10-A</b>	Stop sleeve	Including 1x PVM08X10-A. Industrial shock absorber with bellow excluded.
②	<b>PSH08X10-B</b>	Sensor stop sleeve	Including 1x PVM08X10-A. Sensing only possible via industrial shock absorbers with steel or plastic head. Industrial shock absorber with bellow excluded. Inductive sensor, PNP (NC), 2 m PUR cable, IP67 degree of protection. See separate data sheet for additional information.
③	<b>PBV08X10ND-A</b>	Side load adapter standard stroke Protection: no protection	Impact angle max. 30°. Can only be used in combination with industrial shock absorber without protection and without the Short piston rod no head variant. Lock nut PVM12X10-A suitable for external thread of the side load adapter.
④	<b>PBV08X10NF-A</b>	Side load adapter standard stroke Protection: felt ring (felt)	Impact angle max. 30°. Can only be used in combination with industrial shock absorber without protection and without the Short piston rod no head variant. Lock nut PVM12X10-A suitable for external thread of the side load adapter.
⑤	<b>PBV08X10NA-A</b>	Side load adapter standard stroke Protection: wiper (NBR)	Impact angle max. 30°. Can only be used in combination with industrial shock absorber without protection and without the Short piston rod no head variant. Lock nut PVM12X10-A suitable for external thread of the side load adapter.
⑥	<b>PKS08X10-A</b>	Clamping flange orthogonal screwed	Tightening torque of the screws max. 3 Nm.
⑦	<b>PKP08X10-A</b>	Clamping flange screwed in parallel	Tightening torque of the screws max. 1 Nm.
⑧	<b>PVM08X10-A</b>	Stainless steel locknut	Included with the industrial shock absorber.
⑨	<b>PDD08X10-A</b>	Pressure chamber seal	Recommended fixation with PVM08X10-A. Seal must be in full contact on both sides.



## ▶ CLASSIFICATION

**P SE 08X10 N W A K -A**

### Design

**P** Industrial shock absorbers PowerStop

### Series

**ME** Mini Energy

**SE** Standard Energy

**HE** High Energy

**AE** Adjustable Energy

### Thread

**08** Thread nominal diameter

**X**

**10** Thread pitch (factor 10)

### Stroke variant

**N** Standard stroke

**L** Long stroke

### Hardness degree

**H** Hard (0.1 - 1.2 m/s; Adjustable Energy: 0.1 - 5 m/s)

**M** Medium (0.8 - 2.2 m/s)

**S** Soft (1.8 - 3.5 m/s)

**W** Supersoft (3 - 5 m/s)

### Protection

**D** no protection

**F** Felt ring

**A** Wiper (NBR)

**B** Bellow (TPE)

### Head

**D** Short piston rod no head

**E** Long piston rod no head

**S** with steel head

**K** with plastic head

### Version

**-A** Versioning from a to z