

# INDUSTRIAL SHOCK ABSORBERS POWERSTOP THREAD M14X1

## ► SERIES

PowerStop®



► <b>Material</b>	Stainless steel	► <b>Organic oil (biodegradable)</b>	HEES
► <b>Permitted temperature range</b>	-10 ... +70 [°C]	- <b>H1-certified</b>	Yes
► <b>Angle of Impact max.</b>	2 [°]	- <b>PWIS-free</b>	Yes
► <b>Max. force at fixed stop</b>	3.5 [kN]	► <b>RoHS compliant</b> - <b>REACH compliant</b>	Yes
► <b>Lock nut tightening torque</b>		► <b>Max. absolute pressure</b>	
- <b>Standard energy</b>	15 [Nm]	- <b>Standard energy</b>	1 [bar]
- <b>High Energy</b>	20 [Nm]	- <b>High Energy</b>	10 [bar]
- <b>Adjustable Energy</b>	20 [Nm]	- <b>Adjustable Energy</b>	10 [bar]

## ► TECHNICAL DATA

	Design	Series	Thread	Stroke variant	Stroke max. [mm]	Hardness degree	Impact velocity			Energy absorption max.			Protection	Reset			Head Integrated stop	Version	
							min.	max.	per stroke	per hour	per stroke	Force min. [N]		Time max. [s]					
															min.	max.			Continuous operation
STANDARD ENERGY	P	SE	14X10	N	12	H	0,1	1,2	20	50.000	20	D	3	6	0,3	D	x	-A	
							M	0,8	2,2	20	50.000	20	F	3	6	0,3	E		-
							S	1,8	3,5	20	50.000	20	A	3	6	0,3	S		x
							W	3,0	5,0	20	50.000	20	B	3	15	0,3	K		x
HIGH ENERGY	P	HE	14X10	N	12	H	0,1	1,2	34	50.000	42	D	7	11	0,3	D	x	-A	
							M	0,8	2,2	32	50.000	38	F	7	11	0,3	E		-
							S	1,8	3,5	30	50.000	34	A	7	11	0,3	S		x
							W	3,0	5,0	28	50.000	30	B	7	20	0,3	K		x
ADJUSTABLE ENERGY	P	AE	14X10	N	12	H	0,1	5,0	34	50.000	34	D	7	11	0,3	D	x	-A	
							M	0,8	2,2	32	50.000	38	F	7	11	0,3	E		-
							S	1,8	3,5	30	50.000	34	A	7	11	0,3	S		x
							W	3,0	5,0	28	50.000	30	B	7	20	0,3	K		x
HIGH ENERGY	P	HE	14X10	L	20	H	0,1	1,2	34	50.000	42	D	7	11	0,4	D	x	-A	
							M	0,8	2,2	32	50.000	38	F	7	11	0,4	E		-
							S	1,8	3,5	30	50.000	34	A	7	11	0,4	S		x
							W	3,0	5,0	28	50.000	30	B	7	11	0,4	K		x
ADJUSTABLE ENERGY	P	AE	14X10	L	20	H	0,1	5,0	34	50.000	34	D	7	11	0,4	D	x	-A	
							M	0,8	2,2	32	50.000	38	F	7	11	0,4	E		-
							S	1,8	3,5	30	50.000	34	A	7	11	0,4	S		x
							W	3,0	5,0	28	50.000	30	B	7	11	0,4	K		x

## PROTECTION

no protection	Felt ring	Wiper (NBR)	Bellow (TPE)
D -A	F -A	A -A	B -A
in a clean environment	against dust, chips, ...	against liquid, oil, ...	

## TECHNICAL DRAWINGS

	Short piston rod no head	Long piston rod no head	with steel head	with plastic head	with bellow and steel head	with bellow and plastic head
	N D -A	N E -A	N S -A	N K -A	N B S -A	N B K -A
STANDARD ENERGY	 76, 10, 17, 4, 3, 6, 12, 64, 53g	 81, 12, 4, 17, 64, 54g	 85, 12, 8.5, 12, 9, 64, 60g	 85, 12, 8.5, 12, 9, 64, 59g	 91.5, 12, 8.5, 19, 15.5, 56, 66g	 91.5, 12, 8.5, 19, 15.5, 56, 65g
HIGH ENERGY	 75, 10, 17, 4, 3, 6, 12, 63, 53g	 80, 12, 4, 17, 63, 54g	 84, 12, 8.5, 12, 9, 63, 60g	 84, 12, 8.5, 12, 9, 63, 59g	 90.5, 12, 8.5, 19, 15.5, 55, 66g	 90.5, 12, 8.5, 19, 15.5, 55, 65g
ADJUSTABLE ENERGY	 83, 1.5, 10, 17, 4, 3, 6, 12, 8, 63, 56g	 88, 12, 4, 17, 63, 57g	 92, 12, 8.5, 12, 9, 63, 63g	 92, 12, 8.5, 12, 9, 63, 62g	 98.5, 12, 8.5, 19, 15.5, 55, 69g	 98.5, 12, 8.5, 19, 15.5, 55, 68g

	Short piston rod no head	Long piston rod no head	with steel head	with plastic head
	L D -A	L E -A	L S -A	L K -A
HIGH ENERGY	 102, 10, 17, 4, 3, 6, 20, 82, 69g	 107, 20, 4, 25, 82, 70g	 111, 20, 8.5, 12, 9, 82, 76g	 111, 20, 8.5, 12, 9, 82, 75g
ADJUSTABLE ENERGY	 110, 1.5, 10, 17, 4, 3, 6, 20, 8, 82, 74g	 115, 20, 4, 25, 82, 75g	 119, 20, 8.5, 12, 9, 82, 81g	 119, 20, 8.5, 12, 9, 82, 80g



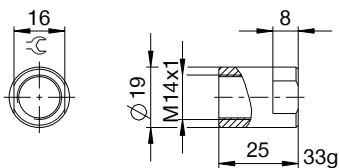
# INDUSTRIAL SHOCK ABSORBERS POWERSTOP

## THREAD M14X1

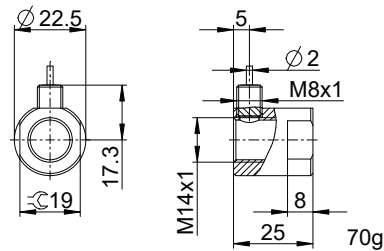
### ACCESSORIES

Pos.	Order no.	Accessories	Remarks
①	<b>PAH14X10-A</b>	Stop sleeve	Including 1x PVM14X10-A. Industrial shock absorber with bellow excluded.
②	<b>PSH14X10-B</b>	Sensor stop sleeve	Including 1x PVM14X10-A. Sensing only possible via industrial shock absorbers with steel or plastic head. Industrial shock absorber with bellow excluded. Inductive sensor, PNP (NC), 2 m PUR cable, IP67 degree of protection. See separate data sheet for additional information.
③	<b>PBV14X10ND-A</b>	Side load adapter standard stroke Protection: no protection	Impact angle max. 30°. Can only be used in combination with industrial shock absorber without protection and without the Short piston rod no head variant. Lock nut PVM20X15-A suitable for external thread of the side load adapter.
④	<b>PBV14X10NF-A</b>	Side load adapter standard stroke Protection: felt ring (felt)	Impact angle max. 30°. Can only be used in combination with industrial shock absorber without protection and without the Short piston rod no head variant. Lock nut PVM20X15-A suitable for external thread of the side load adapter.
⑤	<b>PBV14X10NA-A</b>	Side load adapter standard stroke Protection: wiper (NBR)	Impact angle max. 30°. Can only be used in combination with industrial shock absorber without protection and without the Short piston rod no head variant. Lock nut PVM20X15-A suitable for external thread of the side load adapter.
⑥	<b>PBV14X10LD-A</b>	Side load adapter long stroke Protection: no protection	Impact angle max. 30°. Can only be used in combination with industrial shock absorber without protection and without the Short piston rod no head variant. Lock nut PVM20X15-A suitable for external thread of the side load adapter.
⑦	<b>PBV14X10LF-A</b>	Side load adapter long stroke Protection: felt ring (felt)	Impact angle max. 30°. Can only be used in combination with industrial shock absorber without protection and without the Short piston rod no head variant. Lock nut PVM20X15-A suitable for external thread of the side load adapter.
⑧	<b>PBV14X10LA-A</b>	Side load adapter long stroke Protection: wiper (NBR)	Impact angle max. 30°. Can only be used in combination with industrial shock absorber without protection and without the Short piston rod no head variant. Lock nut PVM20X15-A suitable for external thread of the side load adapter.
⑨	<b>PKS14X10-A</b>	Clamping flange orthogonal screwed	Tightening torque of the screws max. 5 Nm.
⑩	<b>PKP14X10-A</b>	Clamping flange screwed in parallel	Tightening torque of the screws max. 3 Nm.
⑪	<b>PVM14X10-A</b>	Stainless steel locknut	Included with the industrial shock absorber.
⑫	<b>PDD14X10-A</b>	Pressure chamber seal	Recommended fixation with PVM14X10-A. Seal must be in full contact on both sides.

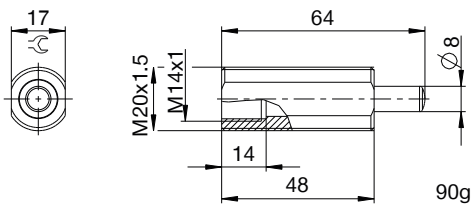
①



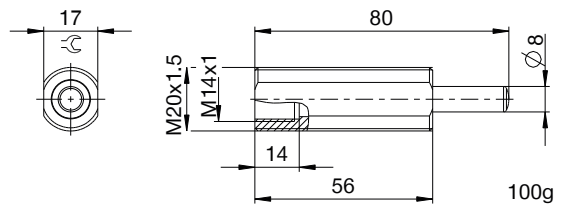
②



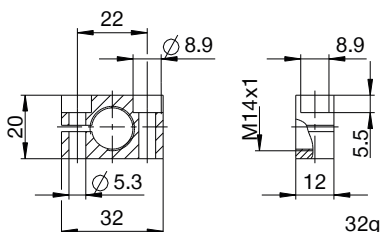
③ ④ ⑤



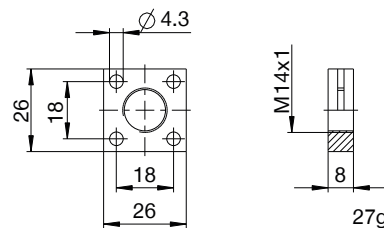
⑥ ⑦ ⑧



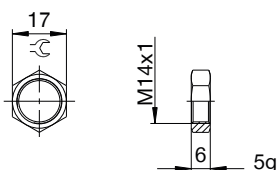
⑨



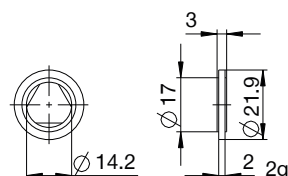
⑩



⑪



⑫



## ▶ CLASSIFICATION

**P** **HE** **14X10** **L** **H** **A** **K** **-A**

### Design

**P** Industrial shock absorbers PowerStop

### Series

**ME** Mini Energy

**SE** Standard Energy

**HE** High Energy

**AE** Adjustable Energy

### Thread

**14** Thread nominal diameter

**X**

**10** Thread pitch (factor 10)

### Stroke variant

**N** Standard stroke

**L** Long stroke

### Hardness degree

**H** Hard (0.1 - 1.2 m/s; Adjustable Energy: 0.1 - 5 m/s)

**M** Medium (0.8 - 2.2 m/s)

**S** Soft (1.8 - 3.5 m/s)

**W** Supersoft (3 - 5 m/s)

### Protection

**D** no protection

**F** Felt ring

**A** Wiper (NBR)

**B** Bellow (TPE)

### Head

**D** Short piston rod no head

**E** Long piston rod no head

**S** with steel head

**K** with plastic head

### Version

**-A** Versioning from a to z