

INDUSTRIAL SHOCK ABSORBERS POWERSTOP

THREAD M25X1.5

► SERIES

PowerStop®



► Material	Stainless steel	► Organic oil (biodegradable)	HEES
► Permitted temperature range	-10 ... +70 [°C]	- H1-certified	Yes
► Angle of Impact max.	2 [°]	- PWIS-free	Yes
► Max. force at fixed stop	17 [kN]	► RoHS compliant - REACH compliant	Yes
► Lock nut tightening torque		► Max. absolute pressure	
- Standard energy	30 [Nm]	- Standard energy	1 [bar]
- High Energy	60 [Nm]	- High Energy	10 [bar]
- Adjustable Energy	60 [Nm]	- Adjustable Energy	10 [bar]

► TECHNICAL DATA

	Design	Series	Thread	Stroke variant	Stroke max. [mm]	Hardness degree	Impact velocity		Energy absorption max.			Protection	Reset			Head Integrated Fix stop	Version	
							min.	max.	Continuous operation		Emergency stop operation		Force min. [N]	Time max. [s]				
									per stroke [J]	per hour [J/h]					per stroke [J]			
STANDARD ENERGY	P	SE	25X15	N	25	H	0,1	1,2	105	120.000	105	D	11	26	0,4	D	x	
							M	0,8	2,2	105	120.000	105	F	11	26	0,4	E	-
							S	1,8	3,5	105	120.000	105	A	11	26	0,4	S	x
							W	3,0	5,0	105	120.000	105	B	11	95	0,4	K	x
HIGH ENERGY	P	HE	25X15	N	25	H	0,1	1,2	230	120.000	400	D	26	45	0,4	D	x	
							M	0,8	2,2	210	120.000	330	F	26	45	0,4	E	-
							S	1,8	3,5	190	120.000	260	A	26	45	0,4	S	x
							W	3,0	5,0	170	120.000	190	B	26	115	0,4	K	x
ADJUSTABLE ENERGY	P	AE	25X15	N	25	H	0,1	5,0	230	120.000	230	D	26	45	0,4	D	x	
							F	26	45	0,4	E	-						
							A	26	45	0,4	S	x						
							B	26	115	0,4	K	x						
HIGH ENERGY	P	HE	25X15	L	40	H	0,1	1,2	230	120.000	400	D	26	45	0,6	D	x	
							M	0,8	2,2	210	120.000	330	-	-	-	-	-	-
							S	1,8	3,5	190	120.000	260	F	26	45	0,6	S	x
							W	3,0	5,0	170	120.000	190	A	26	45	0,6	K	x
ADJUSTABLE ENERGY	P	AE	25X15	L	40	H	0,1	5,0	230	120.000	230	D	26	45	0,6	D	x	
							F	26	45	0,6	E	-						
							S	26	45	0,6	S	x						
							A	26	45	0,6	K	x						

PROTECTION

no protection	Felt ring	Wiper (NBR)	Bellow (TPE)
D -A	F -A	A -A	B -A
in a clean environment	against dust, chips, ...	against liquid, oil, ...	

TECHNICAL DRAWINGS

	Short piston rod no head	Long piston rod no head	with steel head	with plastic head	with bellow and steel head	with bellow and plastic head
	N D -A	N E -A	N S -A	N K -A	N B S -A	N B K -A
STANDARD ENERGY	 132, 19, 30, 8, 4, 10, 25, 107, 260g	 140, 25, 8, 33, 107, 260g	 145, 25, 17, 23, 13, 107, 300g	 145, 25, 17, 23, 13, 107, 300g	 153.5, 25, 17, 31, 21.5, 94.5, 320g	 153.5, 25, 17, 31, 21.5, 94.5, 320g
HIGH ENERGY	 132, 19, 30, 8, 4, 10, 25, 107, 270g	 140, 25, 8, 33, 107, 270g	 145, 25, 17, 23, 13, 107, 310g	 145, 25, 17, 23, 13, 107, 310g	 153.5, 25, 17, 31, 21.5, 94.5, 330g	 153.5, 25, 17, 31, 21.5, 94.5, 330g
ADJUSTABLE ENERGY	 145, 19, 30, 8, 4, 10, 25, 107, 13, 18.6, 2.5, M4, 300g	 153, 25, 8, 33, 107, 300g	 158, 25, 17, 23, 13, 107, 340g	 158, 25, 17, 23, 13, 107, 340g	 166.5, 25, 17, 31, 21.5, 94.5, 360g	 166.5, 25, 17, 31, 21.5, 94.5, 360g

	Short piston rod no head	Long piston rod no head	with steel head	with plastic head
	L D -A	L E -A	L S -A	L K -A
HIGH ENERGY	 182, 19, 30, 8, 4, 10, 40, 142, 360g	 190, 40, 8, 48, 142, 360g	 195, 40, 17, 23, 13, 142, 400g	 195, 40, 17, 23, 13, 142, 400g
ADJUSTABLE ENERGY	 195, 19, 30, 8, 4, 10, 40, 142, 13, 18.6, 2.5, M4, 390g	 203, 40, 8, 48, 142, 390g	 208, 40, 17, 23, 13, 142, 430g	 208, 40, 17, 23, 13, 142, 430g



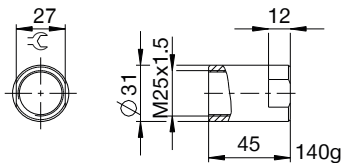
INDUSTRIAL SHOCK ABSORBERS POWERSTOP

THREAD M25X1.5

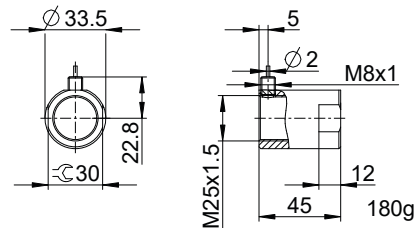
ACCESSORIES

Pos.	Order no.	Accessories	Remarks
①	PAH25X15-A	Stop sleeve	Including 1x PVM25X15-A. Industrial shock absorber with bellow excluded.
②	PSH25X15-B	Sensor stop sleeve	Including 1x PVM25X15-A. Sensing only possible via industrial shock absorbers with steel or plastic head. Industrial shock absorber with bellow excluded. Inductive sensor, PNP (NC), 2 m PUR cable, IP67 degree of protection. See separate data sheet for additional information.
③	PBV25X15ND-A	Side load adapter standard stroke Protection: no protection	Impact angle max. 30°. Can only be used in combination with industrial shock absorber without protection and without the Short piston rod no head variant. Lock nut PVM33X15-A suitable for external thread of the side load adapter.
④	PBV25X15NF-A	Side load adapter standard stroke Protection: felt ring (felt)	Impact angle max. 30°. Can only be used in combination with industrial shock absorber without protection and without the Short piston rod no head variant. Lock nut PVM33X15-A suitable for external thread of the side load adapter.
⑤	PBV25X15NA-A	Side load adapter standard stroke Protection: wiper (NBR)	Impact angle max. 30°. Can only be used in combination with industrial shock absorber without protection and without the Short piston rod no head variant. Lock nut PVM33X15-A suitable for external thread of the side load adapter.
⑥	PBV25X15LD-A	Side load adapter long stroke Protection: no protection	Impact angle max. 30°. Can only be used in combination with industrial shock absorber without protection and without the Short piston rod no head variant. Lock nut PVM33X15-A suitable for external thread of the side load adapter.
⑦	PBV25X15LF-A	Side load adapter long stroke Protection: felt ring (felt)	Impact angle max. 30°. Can only be used in combination with industrial shock absorber without protection and without the Short piston rod no head variant. Lock nut PVM33X15-A suitable for external thread of the side load adapter.
⑧	PBV25X15LA-A	Side load adapter long stroke Protection: wiper (NBR)	Impact angle max. 30°. Can only be used in combination with industrial shock absorber without protection and without the Short piston rod no head variant. Lock nut PVM33X15-A suitable for external thread of the side load adapter.
⑨	PKS25X15-A	Clamping flange orthogonal screwed	Tightening torque of the screws max. 22 Nm.
⑩	PKP25X15-A	Clamping flange screwed in parallel	Tightening torque of the screws max. 10 Nm.
⑪	PVM25X15-A	Stainless steel locknut	Included with the industrial shock absorber.
⑫	PDD25X15-A	Pressure chamber seal	Recommended fixation with PVM25X15-A. Seal must be in full contact on both sides.

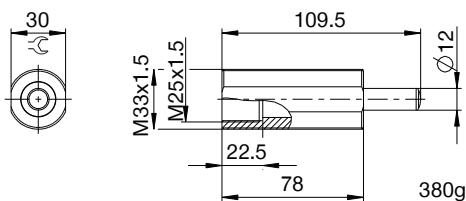
①



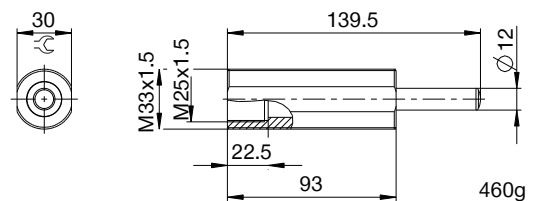
②



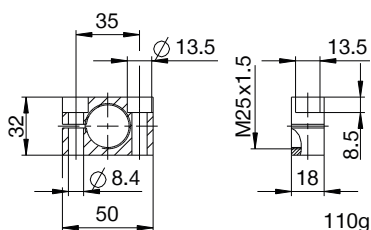
③ ④ ⑤



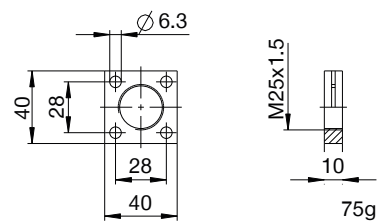
⑥ ⑦ ⑧



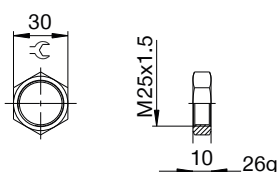
⑨



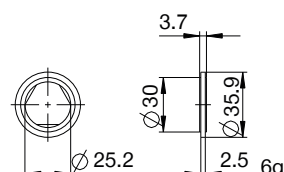
⑩



⑪



⑫



▶ CLASSIFICATION

P HE 25X15 L H A K -A

Design

P Industrial shock absorbers PowerStop

Series

ME Mini Energy

SE Standard Energy

HE High Energy

AE Adjustable Energy

Thread

25 Thread nominal diameter

X

15 Thread pitch (factor 10)

Stroke variant

N Standard stroke

L Long stroke

Hardness degree

H Hard (0.1 - 1.2 m/s; Adjustable Energy: 0.1 - 5 m/s)

M Medium (0.8 - 2.2 m/s)

S Soft (1.8 - 3.5 m/s)

W Supersoft (3 - 5 m/s)

Protection

D no protection

F Felt ring

A Wiper (NBR)

B Bellow (TPE)

Head

D Short piston rod no head

E Long piston rod no head

S with steel head

K with plastic head

Version

-A Versioning from a to z