

INDUSTRIAL SHOCK ABSORBERS POWERSTOP

THREAD M33X1.5

► SERIES

PowerStop®



► Material	Stainless steel	► Organic oil (biodegradable)	HEES
► Permitted temperature range	-10 ... +70 [°C]	- H1-certified	Yes
► Angle of Impact max.	2 [°]	- PWIS-free	Yes
► Max. force at fixed stop	30 [kN]	► RoHS compliant - REACH compliant	Yes
► Lock nut tightening torque		► Max. absolute pressure	
- Standard energy	60 [Nm]	- Standard energy	1 [bar]
- High Energy	80 [Nm]	- High Energy	10 [bar]
- Adjustable Energy	80 [Nm]	- Adjustable Energy	10 [bar]

► TECHNICAL DATA

	Design	Series	Thread	Stroke variant	Stroke max. [mm]	Hardness degree	Impact velocity		Energy absorption max.			Protection	Reset			Head Integrated Fix stop	Version		
							min. [m/s]	max. [m/s]	Continuous operation		Emergency stop operation per stroke [J]		Force		Time max. [s]				
									per stroke [J]	per hour [J/h]			min. [N]	max. [N]					
STANDARD ENERGY	P	SE	33X15	N	30	H	0,1	1,2	185	140.000	185	D	15	35	0,4	D	x	-A	
							M	0,8	2,2	185	140.000	185	F	15	35	0,4	E		-
							S	1,8	3,5	185	140.000	185	A	15	35	0,4	S		x
							W	3,0	5,0	185	140.000	185	B	15	230	0,4	K		x
HIGH ENERGY	P	HE	33X15	N	30	H	0,1	1,2	400	140.000	800	D	40	65	0,4	D	x	-A	
							M	0,8	2,2	360	140.000	650	F	40	65	0,4	E		-
							S	1,8	3,5	320	140.000	500	A	40	65	0,4	S		x
							W	3,0	5,0	280	140.000	350	B	40	260	0,4	K		x
ADJUSTABLE ENERGY	P	AE	33X15	N	30	H	0,1	5,0	400	140.000	400	D	40	65	0,4	D	x	-A	
							M	0,8	2,2	360	140.000	650	F	40	65	0,4	E		-
							S	1,8	3,5	320	140.000	500	A	40	65	0,4	S		x
							W	3,0	5,0	280	140.000	350	B	40	260	0,4	K		x
HIGH ENERGY	P	HE	33X15	L	50	H	0,1	1,2	400	140.000	800	D	40	65	0,8	D	x	-A	
							M	0,8	2,2	360	140.000	650	F	40	65	0,8	E		-
							S	1,8	3,5	320	140.000	500	A	40	65	0,8	S		x
							W	3,0	5,0	280	140.000	350	A	40	65	0,8	K		x
ADJUSTABLE ENERGY	P	AE	33X15	L	50	H	0,1	5,0	400	140.000	400	D	40	65	0,8	D	x	-A	
							M	0,8	2,2	360	140.000	650	F	40	65	0,8	E		-
							S	1,8	3,5	320	140.000	500	A	40	65	0,8	S		x
							W	3,0	5,0	280	140.000	350	A	40	65	0,8	K		x

PROTECTION

no protection	Felt ring	Wiper (NBR)	Bellow (TPE)
D -A	F -A	A -A	B -A
in a clean environment	against dust, chips, ...	against liquid, oil, ...	

TECHNICAL DRAWINGS

	Short piston rod no head	Long piston rod no head	with steel head	with plastic head	with bellow and steel head	with bellow and plastic head
	N D -A	N E -A	N S -A	N K -A	N B S -A	N B K -A
STANDARD ENERGY	 155, 125, 570g	 165, 125, 580g	 170, 125, 640g	 170, 125, 640g	 181, 110.5, 700g	 181, 110.5, 700g
HIGH ENERGY	 156, 126, 590g	 166, 126, 600g	 171, 126, 660g	 171, 126, 660g	 182, 111.5, 720g	 182, 111.5, 720g
ADJUSTABLE ENERGY	 173, 126, 640g	 183, 126, 640g	 188, 126, 710g	 188, 126, 710g	 199, 111.5, 770g	 199, 111.5, 770g

	Short piston rod no head	Long piston rod no head	with steel head	with plastic head
	L D -A	L E -A	L S -A	L K -A
HIGH ENERGY	 221, 171, 790g	 231, 171, 800g	 236, 171, 860g	 236, 171, 860g
ADJUSTABLE ENERGY	 238, 171, 850g	 248, 171, 860g	 253, 171, 920g	 253, 171, 920g



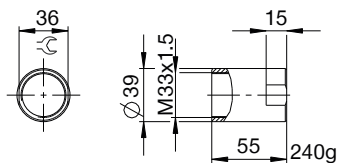
INDUSTRIAL SHOCK ABSORBERS POWERSTOP

THREAD M33X1.5

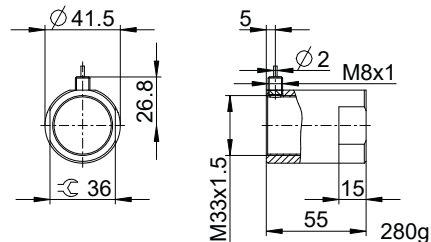
ACCESSORIES

Pos.	Order no.	Accessories	Remarks
①	PAH33X15-A	Stop sleeve	Including 1x PVM33X15-A. Industrial shock absorber with bellow excluded.
②	PSH33X15-B	Sensor stop sleeve	Including 1x PVM33X15-A. Sensing only possible via industrial shock absorbers with steel or plastic head. Industrial shock absorber with bellow excluded. Inductive sensor, PNP (NC), 2 m PUR cable, IP67 degree of protection. See separate data sheet for additional information.
③	PBV33X15ND-A	Side load adapter standard stroke Protection: no protection	Impact angle max. 30°. Can only be used in combination with industrial shock absorber without protection and without the Short piston rod no head variant. Lock nut PVM42X15-A suitable for external thread of the side load adapter.
④	PBV33X15NF-A	Side load adapter standard stroke Protection: felt ring (felt)	Impact angle max. 30°. Can only be used in combination with industrial shock absorber without protection and without the Short piston rod no head variant. Lock nut PVM42X15-A suitable for external thread of the side load adapter.
⑤	PBV33X15NA-A	Side load adapter standard stroke Protection: wiper (NBR)	Impact angle max. 30°. Can only be used in combination with industrial shock absorber without protection and without the Short piston rod no head variant. Lock nut PVM42X15-A suitable for external thread of the side load adapter.
⑥	PBV33X15LD-A	Side load adapter long stroke Protection: no protection	Impact angle max. 30°. Can only be used in combination with industrial shock absorber without protection and without the Short piston rod no head variant. Lock nut PVM42X15-A suitable for external thread of the side load adapter.
⑦	PBV33X15LF-A	Side load adapter long stroke Protection: felt ring (felt)	Impact angle max. 30°. Can only be used in combination with industrial shock absorber without protection and without the Short piston rod no head variant. Lock nut PVM42X15-A suitable for external thread of the side load adapter.
⑧	PBV33X15LA-A	Side load adapter long stroke Protection: wiper (NBR)	Impact angle max. 30°. Can only be used in combination with industrial shock absorber without protection and without the Short piston rod no head variant. Lock nut PVM42X15-A suitable for external thread of the side load adapter.
⑨	PKS33X15-A	Clamping flange orthogonal screwed	Tightening torque of the screws max. 45 Nm.
⑩	PKP33X15-A	Clamping flange screwed in parallel	Tightening torque of the screws max. 22 Nm.
⑪	PVM33X15-A	Stainless steel locknut	Included with the industrial shock absorber.
⑫	PDD33X15-A	Pressure chamber seal	Recommended fixation with PVM33X15-A. Seal must be in full contact on both sides.

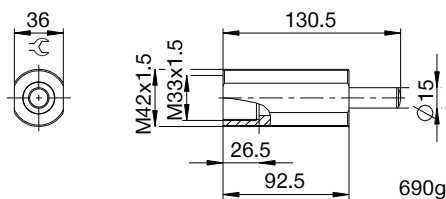
①



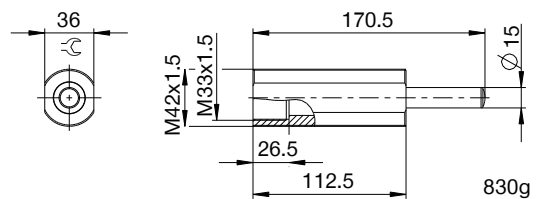
②



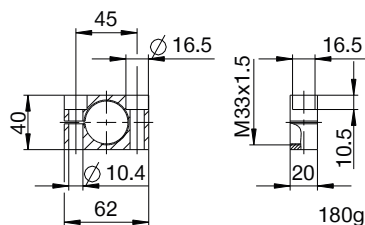
③ ④ ⑤



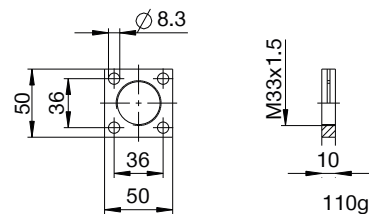
⑥ ⑦ ⑧



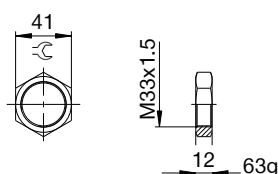
⑨



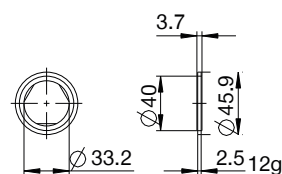
⑩



⑪



⑫



▶ CLASSIFICATION

P HE 33X15 L H A K -A

Design

P Industrial shock absorbers PowerStop

Series

ME Mini Energy

SE Standard Energy

HE High Energy

AE Adjustable Energy

Thread

33 Thread nominal diameter

X

15 Thread pitch (factor 10)

Stroke variant

N Standard stroke

L Long stroke

Hardness degree

H Hard (0.1 - 1.2 m/s; Adjustable Energy: 0.1 - 5 m/s)

M Medium (0.8 - 2.2 m/s)

S Soft (1.8 - 3.5 m/s)

W Supersoft (3 - 5 m/s)

Protection

D no protection

F Felt ring

A Wiper (NBR)

B Bellow (TPE)

Head

D Short piston rod no head

E Long piston rod no head

S with steel head

K with plastic head

Version

-A Versioning from a to z