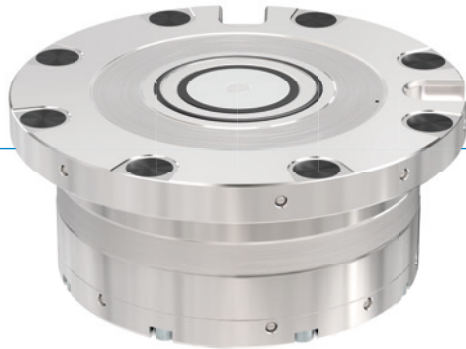


SPN ZERO-POINT CLAMPING SYSTEM

SPN ADVANCED SERIES – THE SUPERIOR

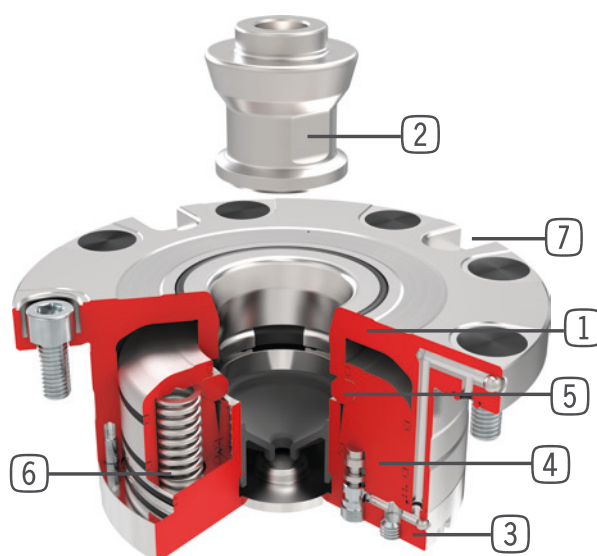
▶ PRODUCT ADVANTAGES



- ▶ Locking by means of clamping segments
- ▶ PLUS connection
- ▶ Rustproof – tempered stainless steel
- ▶ Two integrated rotation locks
- ▶ Integrated positioning check
- ▶ Pneumatic piston position sensing
- ▶ Integrated blow-out function
- ▶ Two connection options
- ▶ Optional automatic seal

- ▶ The zero-point clamping system of Zimmer Group's Advanced series provides a number of functions that are one-of-a-kind in this form and composition. Functions such as the PLUS connection, positioning check and pneumatic piston position sensing are integrated as standard, as well as air discharge of the pin opening and contact surface cleaning. The zero-point clamping system offers two connection options for maximum flexibility: either via spot facing on the flange surface or via hoses at the base of the element. To ensure the best protection, in addition to the standard integrated blow-out function, there is also an automatic seal that reliably protects the pin opening. The zero-point clamping system is able to absorb maximum forces with maximum repeatability. This is achieved through a sophisticated clamping principle that uses clamping segments for positive locking. In comparison to conventional systems where balls are in point contact, clamping segments adapted to the clamping contour establish the surface contact between the clamping system and clamping pin. This gives the system a very high rigidity.

▶ TECHNICAL DETAILS

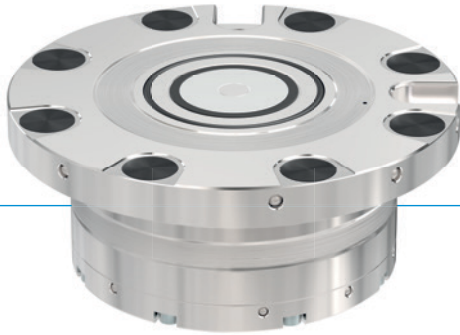


- ① Housing
- ② Clamping pins
- ③ Cover
- ④ Clamp dog
- ⑤ Clamping segments
- ⑥ Spring assembly
- ⑦ Torque support/rotation lock

SPN ZERO-POINT CLAMPING SYSTEM













SPN112 ADVANCED

▶ PRODUCT ADVANTAGES



- ▶ Pre-positioning 22 mm before reaching end position
- ▶ Automatic centering and pull-in already 1 mm before reaching end position
- ▶ Resistant against contamination
- ▶ Mechanical locked in clamping position
- ▶ Low operating pressure of 4 or 6bar
- ▶ Maintenance free

▶ EQUIPMENT FEATURES

	Pneumatic		Stainless steel
	Form fit		Pins compatible with reference system
	PLUS connection		Low height
	Tubeless connection		Repeatability
	Torque support		Hardened
	Automatic seal		Piston position sensing / positioning check

▶ INCLUDED IN DELIVERY



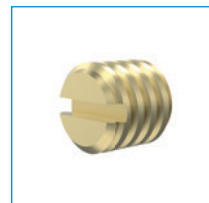
Mounting screw
M6x14 12.9
C0912060144D



O-ring
3,5x1,5
COR003515V



Cover cap
M6
093088



Venting filter
CFILT00052



Sealing pin
SPZ112BV-B

▶ OPTIONAL ACCESSORIES



Automatic seal
SPZ112AV-B

▶ TECHNICAL DATA

Order no.	▶ Technical Data	
	SPN112E6AD-B	SPN112E4AD-B
Holding force max.	M10/M12	M10/M12
Operating pressure [bar]	6 ... 7	4 ... 7
Pull-in force [kN]	6.0	4.0
Pull-in force with PLUS connection [kN]	15.0	10.0
Operating temperature [°C]	-10 ... +70	-10 ... +70
Rotation prevention	Yes	Yes
PLUS connection	Yes	Yes
Air cleaning	Yes	Yes
Contact monitoring	Yes	Yes
Contact seal	Yes	Yes
Repetition accuracy [mm]	0.005	0.005
Material	Tempered stainless steel	Tempered stainless steel
Weight [kg]	1.5	1.4

