

TOOL CHANGERS

SERIES WWR1000

▶ PRODUCT ADVANTAGES



▶ **Secure hold during pressure drop**

A redundant system, created by the combination of spring accumulator and a self locking mechanism, guarantees a safe machine

▶ **Handling weight from up to one tonne**

Automated changes can be carried out by this changer with process reliability even with the largest robots

▶ **Inexhaustible variety of media transfer systems**

No matter which medium you would like to transmit, we will draw from our wealth of experience in implementing projects and find a solution to suit your needs!

▶ THE BEST PRODUCT FOR YOUR APPLICATION



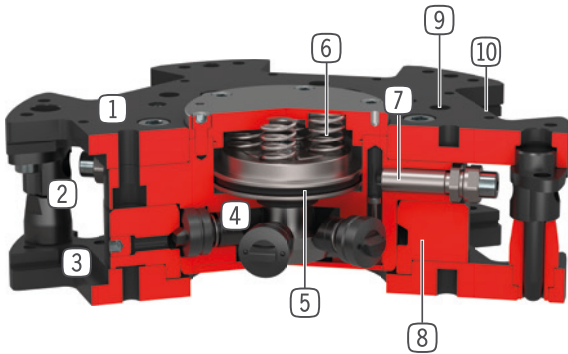
▶ **Our products welcome the challenge!**

Extreme conditions, all over the world—our tried and tested components and systems give you endless possibilities.

Find the best product for your specific use:

www.zimmer-group.com

► BENEFITS IN DETAIL



- ① **Fix part**
- For robot side assembly
- ② **Centering pins**
- twist protection and positioning for loose part
- ③ **Loose part**
- for tool side assembly
- ④ **Locking bolt**
- adapted to the clamping sleeve
- ⑤ **Drive**
- double-acting pneumatic cylinder
- ⑥ **Integrated spring**
- energy storage in case of drop in pressure
- ⑦ **Piston position sensing**
- via inductive proximity switch
- ⑧ **Locking sleeve**
- ⑨ **Robot flange**
- partial mounting circle in accordance with EN ISO 9409-1
- ⑩ **Mounting for energy element**

► TECHNICAL DATA

Installation size	Connecting flange according EN ISO 9409-1	Electrical energy transfer	Fluid energy transfer
WWR1160	TK 160	optional	optional
WWR1200	TK 200	optional	optional

► FURTHER INFORMATION IS AVAILABLE ONLINE



All information just a click away at: www.zimmer-group.com. Find data, illustrations, 3D models and operating instructions for your installation size using the order number for your desired product. Quick, clear and always up-to-date.

TOOL CHANGERS

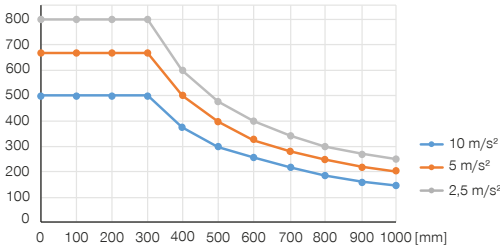
INSTALLATION SIZE WWR1160

▶ PRODUCT SPECIFICATIONS



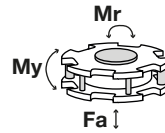
▶ Variable installation position

Shows the maximum handling weight depending on acceleration and lever arm. Does not replace the technical design.
[kg]



▶ Forces and moments

Shows static forces and moments which may impact on the tool changer when locked.



Mr [Nm]	6000
My [Nm]	6000
Fa [N]	35000

▶ INCLUDED IN DELIVERY



2 [piece]
Mounting bracket for proximity switch
ZUB0014

▶ RECOMMENDED ACCESSORIES



ENERGY SUPPLY



GV1-8X8
Straight Fittings - Quick Connect Style



CONNECTIONS / OTHER



Energy elements and accessories for tool changer



SENSORS



NJ8-E2S-17
Inductive proximity switch - Connector M8



KAG500
Plug-in connector Straight Cable 5m - Socket M8 (female)

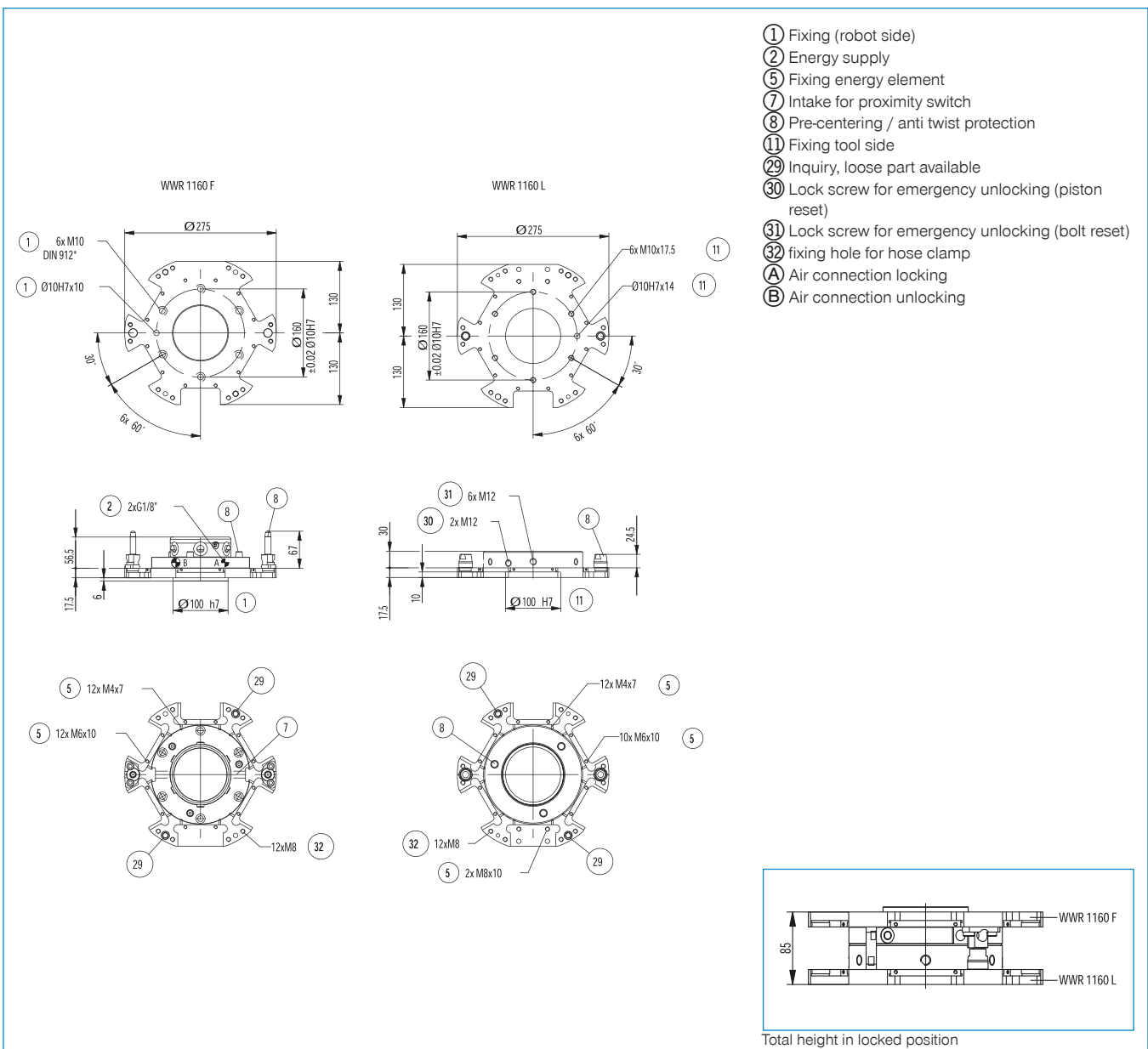


ZUB0022
Programming pins



ALSR1-1200
Storage station

Order no.	► Technical data	
	WWR1160F	WWR1160L
Connecting flange according EN ISO 9409-1	TK 160	TK 160
Electrical energy transfer	optional	optional
Fluid energy transfer	optional	optional
Self locking mechanism when locking	mechanical	mechanical
Locking stroke [mm]	1	
Repetition accuracy +/- [mm]	0.02	0.02
Offset at coupling max. in X,Y [mm]	3.0	3.0
Operating pressure [bar]	6 ... 8	6 ... 8
Nominal operating pressure [bar]	6	6
Operating temperature [°C]	5 ... +80	5 ... +80
Air volume per cycle [cm³]	48	
Weight [kg]	8.7	5.3



ENERGY ELEMENTS FOR TOOL CHANGER

SIZES WWR1160 / WWR1200

▶ CONNECTION DIAGRAM

